



京

公





	2
1	2
2	2
3	2
4	2
	3
	3
	4
1	4
2	5
3	5
4	6
5	6
6	7
	8
1	8
2 Modbus	8
3	11
4	14
4.1	14
4.2	14
4.3	15
4.4	16
4.5	16
4.6	17
	18
	18
	18



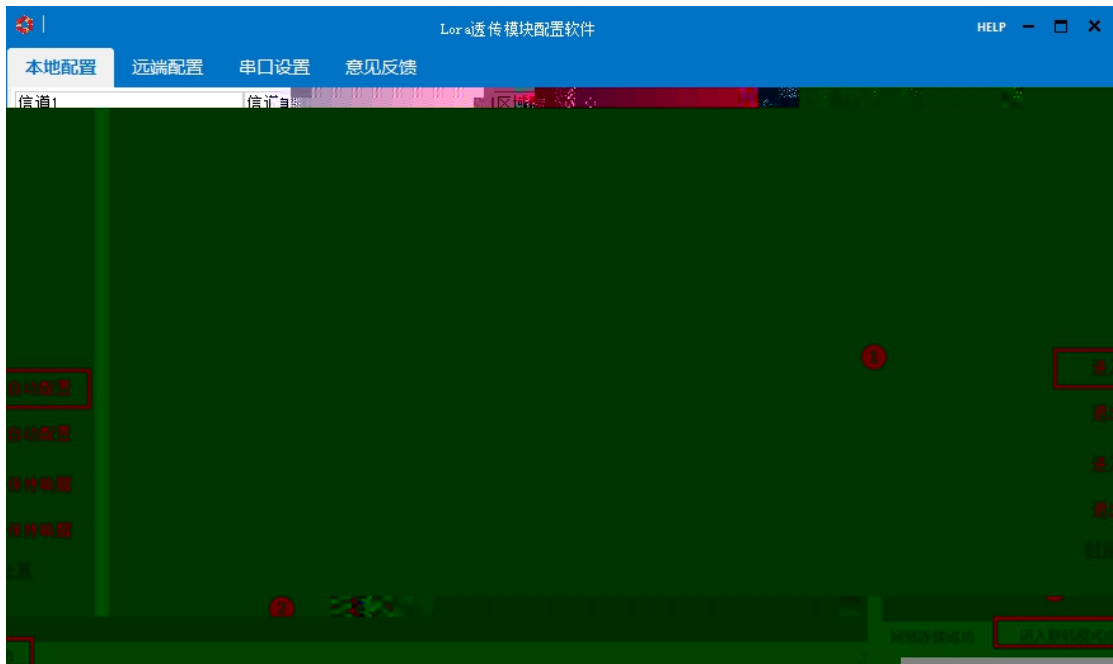
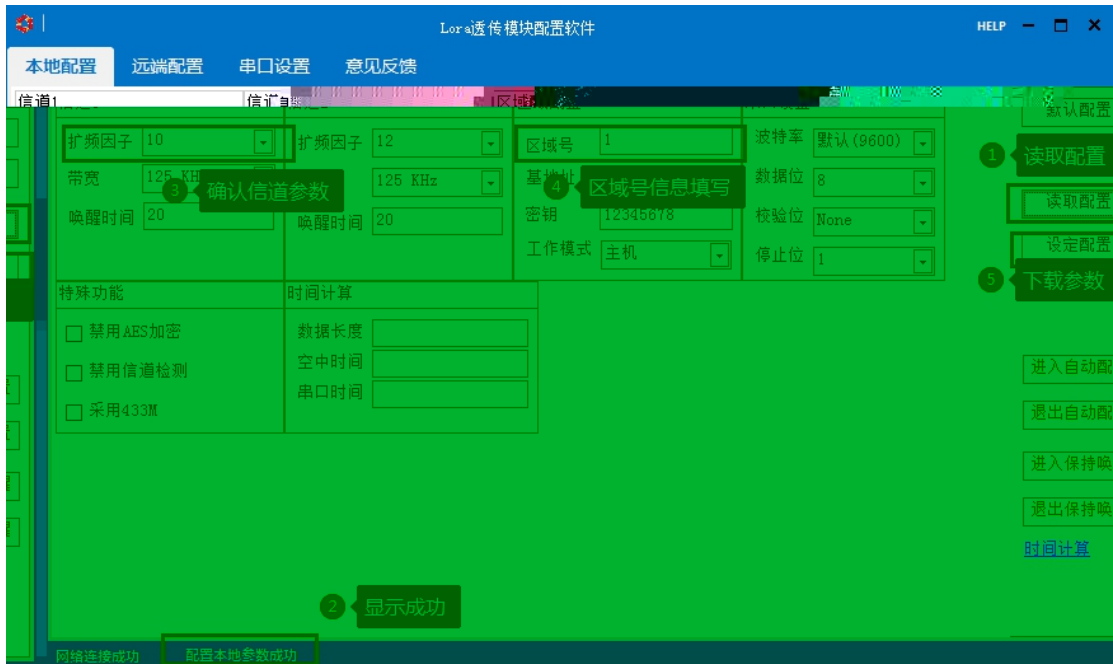
1

- DC7-30V
- wifi GPRS 485 USB
- modbus RTU/TCP
- 12 3kM
-

- 32
- 32
- 200
-
-
-

- LORA1000
- LORA1000ML DAM LORA
- 3x70

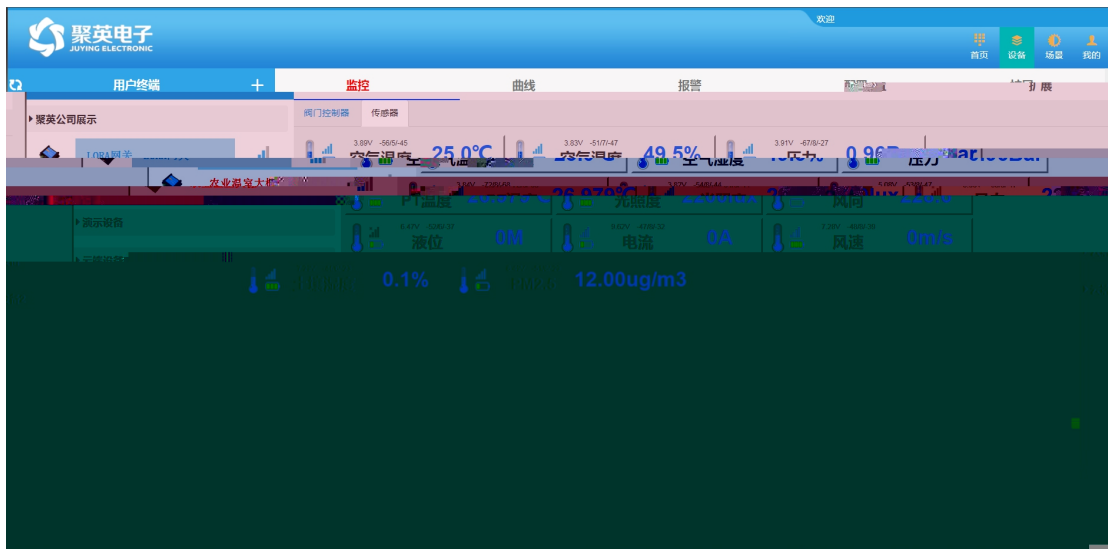
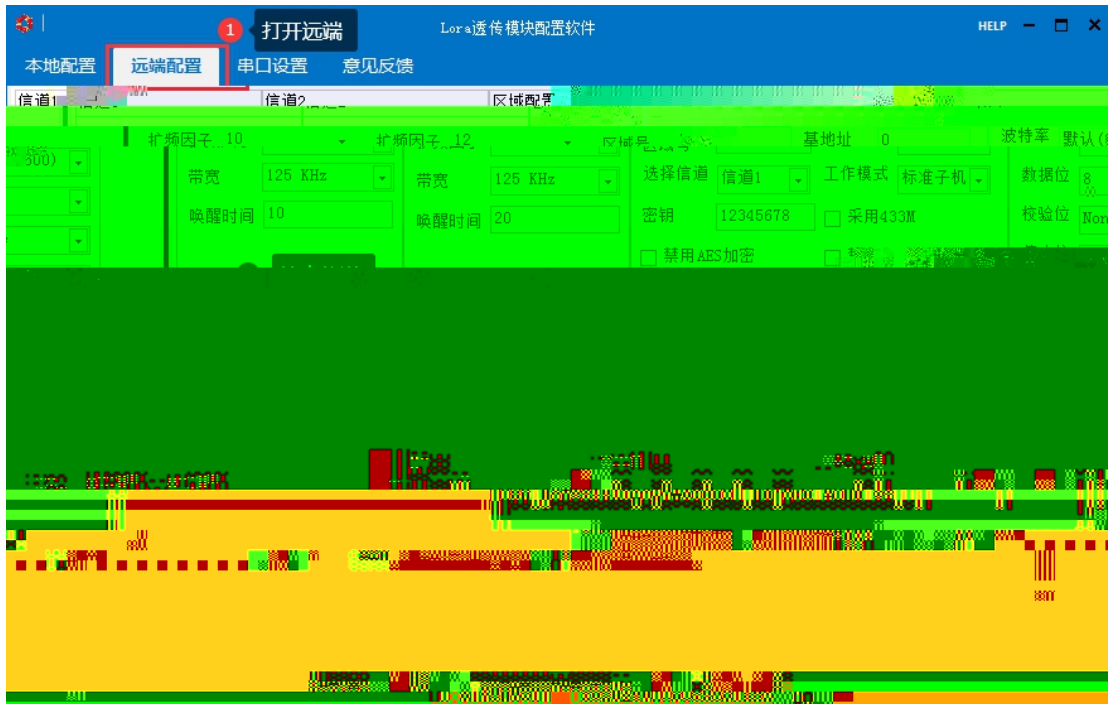




3S

3S

3





3S

3S

3

DAM



DAM





1

modbus MODBUS

M db

h :// .j i gele.c m.c / f a e/ f a e/M db %20POLL

. a

DO1	01	0	
DO2	05	1	
DO3		2	
DO4	15	3	
DO5		4	
DO6		5	
DO7		6	
DO8		7	
DO9		8	
DO10		9	
DO11		10	
DO12		11	
DO13		12	
DO14		13	
DO15		14	
DO16		15	
DO17		16	
DO18		17	
DO19		18	
DO20		19	
DO21		20	
DO22		21	
DO23		22	
DO24		23	
DO25		24	
DO26		25	
DO27		26	



DO28		27	
DO29		28	
DO30		29	
DO31		30	
DO32		31	
DI1	02:	0	
DI2		1	
DI3		2	
DI4		3	
DI5		4	
DI6		5	
DI7		6	
DI8		7	
DI9		8	
DI10		9	
DI11		10	
DI12		11	
DI13		12	
DI14		13	
DI15		14	
DI16		15	
DI17		16	
DI18		17	
DI19		18	
DI20		19	
DI21		20	
DI22		21	
DI23		22	
DI24		23	
DI25		24	
DI26		25	
DI27		26	
DI28		27	
DI29		28	
DI30		29	
DI31		30	
DI32		31	
AI1	04	u16	0
AI2		u16	1



AI3	float 50	u16	2	
AI4		u16	3	
AI5		u16	4	
AI6		u16	5	
AI7		u16	6	
AI8		u16	7	
AI9		u16	8	
AI10		u16	9	
AI11		u16	10	
AI12		u16	11	
AI13		u16	12	
AI1- 1				
AI15		u16	1- 1	
AI16		u16	15	
AI17		u16	16	
AI18		u16	17	
AI19		u16	18	
AI20		u16	19	
AI21		u16	20	
AI22		u16	21	
AI23		u16	22	
AI2- 1			23	
AI25		u16	2- 1	
AI26		u16	25	
AI27		u16	26	
AI28		u16	27	
AI29		u16	28	
AI30		u16	29	
AI31		u16	30	
AI32		u16	21	
RS 85			1000	RS 85 0
		1002	=	

PLC/ Mo bus

00001 09999 ()

10001 19999 ()

30001 39999 ()

0001 9999

5 4 1 0



00001 0000

PLC/

Modbus

Modbus

PLC

MCGS/

/

/WINCC/

1 1000

2 1001

Bit0~Bit7		0 9600 1 2400 2 4800 3 9600 4 19200 5 38400 6 115200 7 57600 8 56000 9 14400 10 1200
Bit8~Bit9		0 1 Even 2 Odd
Bit10~Bit11		0 1 1 2 2 1.5

1	RTU 16
	FE 01 00 00 00 20 29 DD
	FE 01 04 00 00 00 00 F4 DE
	FE 05 00 00 FF 00 98 35
	FE 05 00 00 FF 00 98 35
	FE 05 00 00 00 00 D9 C5
	FE 05 00 00 00 00 D9 C5
	FE 05 00 01 FF 00 C9 F5
	FE 05 00 01 00 00 88 05

	FE 05 00 02 FF 00 39 F5
	FE 05 00 02 00 00 78 05
	FE 05 00 03 FF 00 68 35
	FE 05 00 03 00 00 29 C5
	FE 05 00 04 FF 00 D9 F4
	FE 05 00 04 00 00 98 04
	FE 05 00 05 FF 00 88 34
	FE 05 00 05 00 00 C9 C4
	FE 05 00 06 FF 00 78 34
	FE 05 00 06 00 00 39 C4
	FE 05 00 07 FF 00 29 F4
	FE 05 00 07 00 00 68 04
	FE 05 00 08 FF 00 19 F7
	FE 05 00 08 00 00 58 07
	FE 05 00 09 FF 00 48 37
	FE 05 00 09 00 00 09 C7
	FE 05 00 0A FF 00 B8 37
	FE 05 00 0A 00 00 F9 C7
	FE 05 00 0B FF 00 E9 F7
	FE 05 00 0B 00 00 A8 07
	FE 05 00 0C FF 00 58 36
	FE 05 00 0C 00 00 19 C6
	FE 05 00 0D FF 00 09 F6
	FE 05 00 0D 00 00 48 06
	FE 05 00 0E FF 00 F9 F6
	FE 05 00 0E 00 00 B8 06
	FE 05 00 0F FF 00 A8 36
	FE 05 00 0F 00 00 E9 C6
	FE 05 00 10 FF 00 99 F0
	FE 05 00 10 00 00 D8 00
	FE 05 00 11 FF 00 C8 30
	FE 05 00 11 00 00 89 C0
	FE 05 00 12 FF 00 38 30
	FE 05 00 12 00 00 79 C0
	FE 05 00 13 FF 00 69 F0
	FE 05 00 13 00 00 28 00
	FE 05 00 14 FF 00 D8 31
	FE 05 00 14 00 00 99 C1
	FE 05 00 15 FF 00 89 F1
	FE 05 00 15 00 00 C8 01
	FE 05 00 16 FF 00 79 F1

	FE 05 00 16 00 00 38 01
	FE 05 00 17 FF 00 28 31
	FE 05 00 17 00 00 69 C1
	FE 05 00 18 FF 00 18 32
	FE 05 00 18 00 00 59 C2
	FE 05 00 19 FF 00 49 F2
	FE 05 00 19 00 00 08 02
	FE 05 00 1A FF 00 B9 F2
	FE 05 00 1A 00 00 F8 02
	FE 05 00 1B FF 00 E8 32
	FE 05 00 1B 00 00 A9 C2
	FE 05 00 1C FF 00 59 F3
	FE 05 00 1C 00 00 18 03
	FE 05 00 1D FF 00 08 33
	FE 05 00 1D 00 00 49 C3
	FE 05 00 1E FF 00 F8 33
	FE 05 00 1E 00 00 B9 C3
	FE 05 00 1F FF 00 A9 F3
	FE 05 00 1F 00 00 E8 03
2	
	FE 02 00 00 00 20 6D DD
	FE 02 04 00 00 00 00 F4 ED
3	
1	FE 04 00 00 00 01 25 C5
	FE 04 02 00 00 AD 24
2	FE 04 00 01 00 01 74 05
3	FE 04 00 02 00 01 84 05
4	FE 04 00 03 00 01 D5 C5
5	FE 04 00 04 00 01 64 04
6	FE 04 00 05 00 01 35 C4
7	FE 04 00 06 00 01 C5 C4
8	FE 04 00 07 00 01 94 04
9	FE 04 00 08 00 01 A4 07
10	FE 04 00 09 00 01 F5 C7
11	FE 04 00 0A 00 01 05 C7
12	FE 04 00 0B 00 01 54 07
13	FE 04 00 0C 00 01 E5 C6
14	FE 04 00 0D 00 01 B4 06
15	FE 04 00 0E 00 01 44 06
16	FE 04 00 0F 00 01 15 C6
17	FE 04 00 10 00 01 24 00



18	FE 04 00 11 00 01 75 C0
19	FE 04 00 12 00 01 85 C0
20	FE 04 00 13 00 01 D4 00
21	FE 04 00 14 00 01 65 C1
22	FE 04 00 15 00 01 34 01
23	FE 04 00 16 00 01 C4 01
24	FE 04 00 17 00 01 95 C1
25	FE 04 00 18 00 01 A5 C2
26	FE 04 00 19 00 01 F4 02
27	FE 04 00 1A 00 01 04 02
28	FE 04 00 1B 00 01 55 C2
29	FE 04 00 1C 00 01 E4 03
30	FE 04 00 1D 00 01 B5 C3
31	FE 04 00 1E 00 01 45 C3
32	FE 04 00 1F 00 01 14 03
1~32	FE 04 00 00 00 20 E5 DD

FE 05 00 00 FF 00 98 35

FE			
05	05		
00 00			
FF 00			
98 35	CRC16	6	CRC16

FE 05 00 00 FF 00 98 35

FE			
05	05		
00 00			
FF 00			
98 35	CRC16	6	CRC16



FE 01 00 00 00 20 29 DD

FE			
01	01		
00 00			
00 20			
29 DD	CRC16	6	CRC16

FE 01 04 00 00 00 00 F4 DE

FE			
01	01		0x81
04			1+(n-1)/8
00			
00		Bit0:	
00		Bit1:	
00		Bit32:	32
61 9C	CRC16	6	CRC16

FE			
02	02)
00 00			
00 20			
6D DD	CRC16		

FE 02 04 00 00 00 00 F4 ED

FE			
02	02		0x82
04			1+(n-1)/8
00			
00		Bit0:	
00		Bit1:	
00			



		Bi32:
F4 ED	CRC16	

FE		
04	04	
00 00		
00 20		
E5 DD	CRC16	

FE				
04	04			0x82
40				
00 00		AD	0x1232	4658 AD
.....			=	*0.001 4.658mA
44 5D	CRC16			

FE			
0F			0x82
00 10			
02			
FF FF (00 00		FF FF	00 00
A1 7C	CRC16		

FE		
----	--	--



0F		0x82
00 10		
C1 C3	CRC16	

= *0.001

FE		
04	04	
00 00		
00 0C		
	CRC16	

04 18 00

81 60

FE		
04	04	0x82
18		1+(n-1)/8
00 00.....00 00	AD	0x00 00 0 AD
81 60	CRC16	



LORA

5

1

400-6688-400 010-82899827-803

QQ 3323725294

