





	1
	1
	1
	1
	2
Reset	2
	2
1	3
	3
1	3
2 TCP Client	4
3 UDP	4
	4
1 COM	4
2	5
3	5



JY-TCPCOM-601 TCP UDP TTL
ARM
TCP/IP
10/100M 256Kbps, TCP
Client, UDP

- ◆ DC7-30V
- ◆ RS232 RS485
- ◆

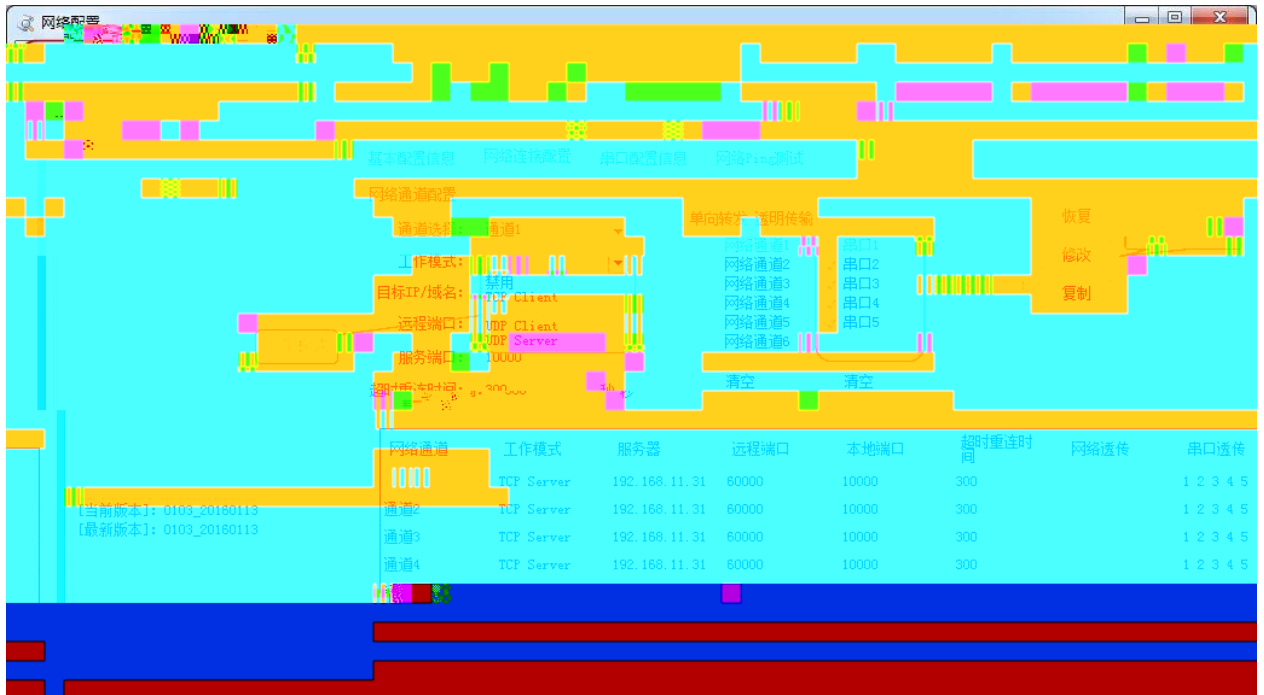
- ◆ 10/100M ;
- ◆ RS232 RS485
- ◆ AUTO MDI/MDIX ;
- ◆ 115.2kbps ;
- ◆ TCP Server,TCP Client, UDP ;
- ◆
- ◆ IP ;
- ◆
- ◆ UDP ;
- ◆



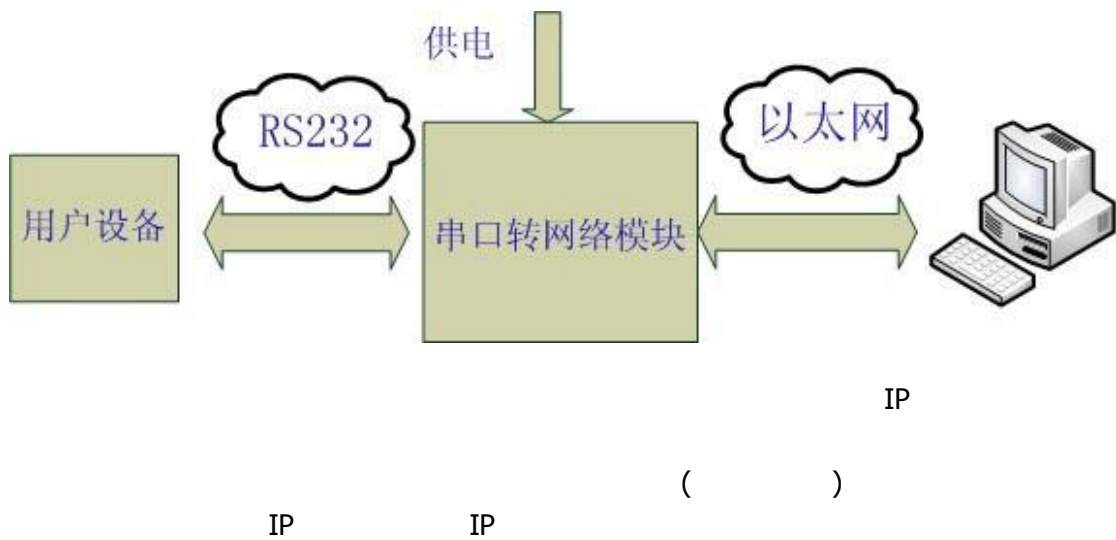
1	6S	RUN	DHCP	IP
2	6S	RUN	DHCP	IP
	192.168.1.xxx			
3		232 485		

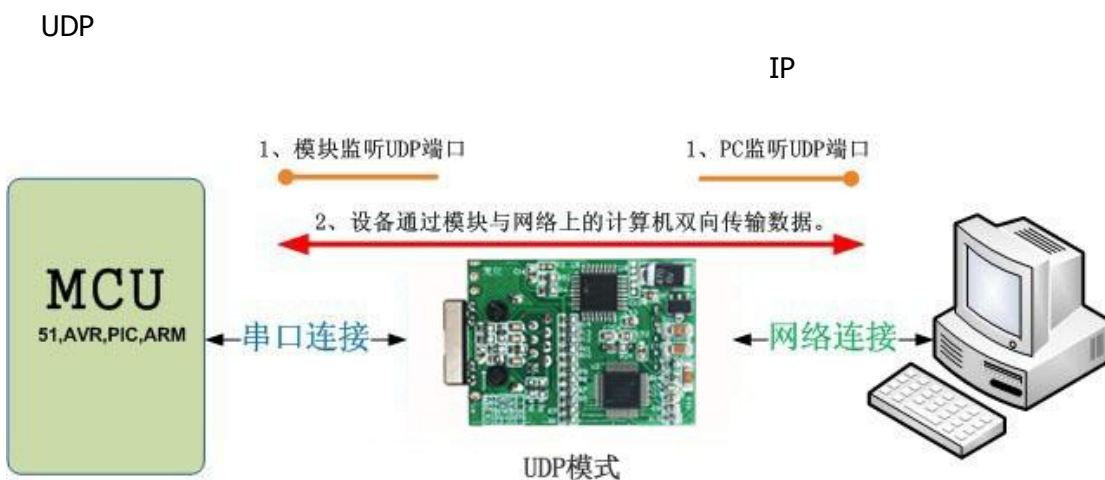
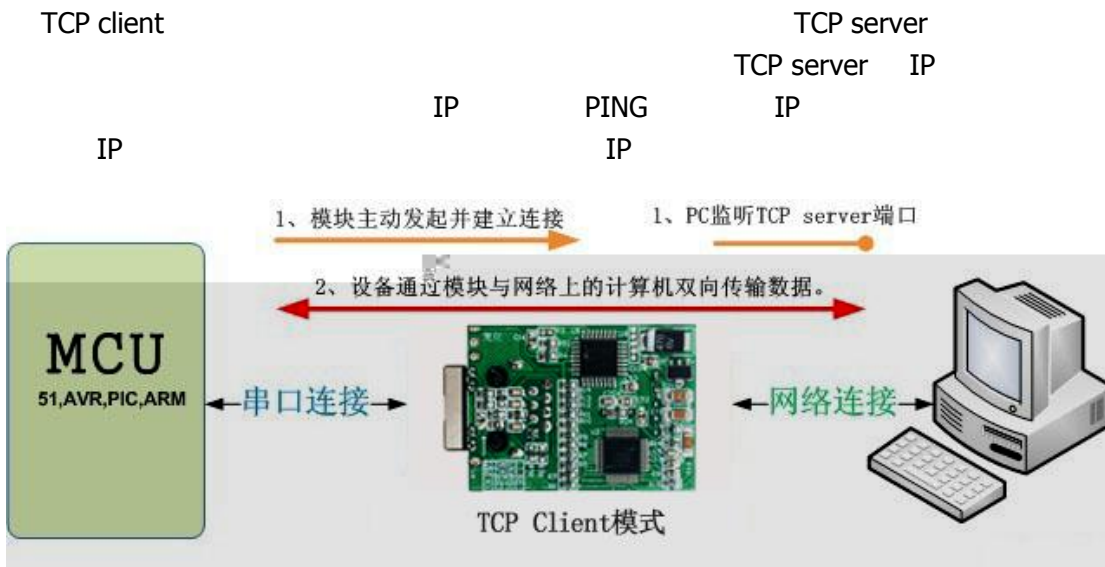


1



JY-TCPCOM-601

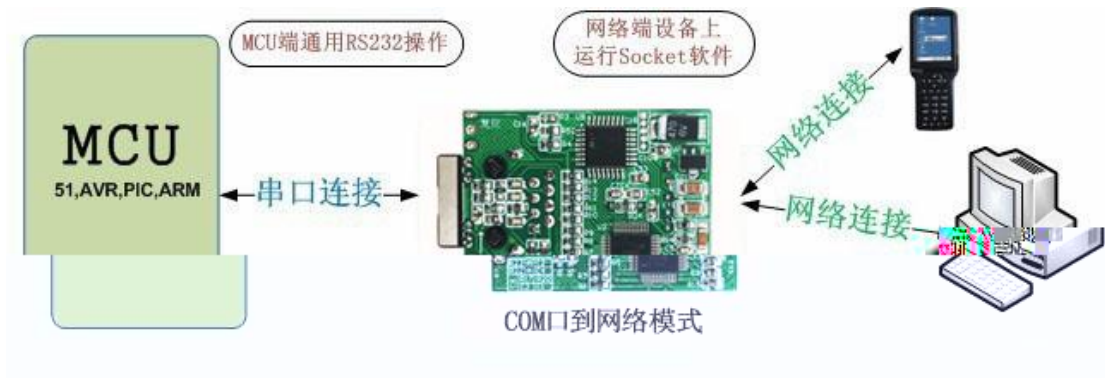




COM

socket

COM



VSPM

