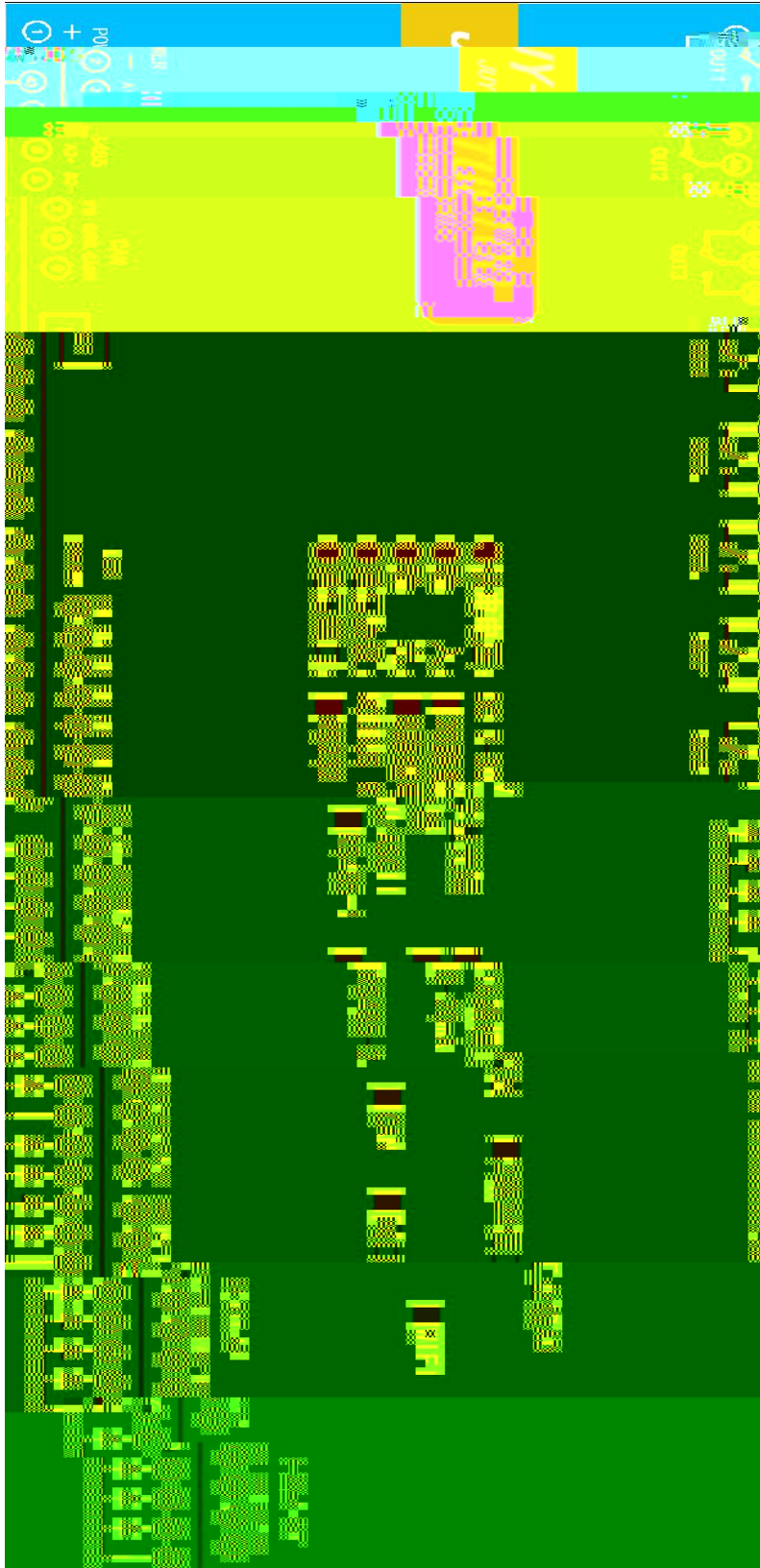




		1
		1
		1
		1
		2
		3
1	232	3
2	485	3
		4
1		4
2		4
3		4
		5
1		5
2		6
3		6
		7
1		7
2		8
3		9
		9
1		9
2		10
3		12
4		13
		17
		18

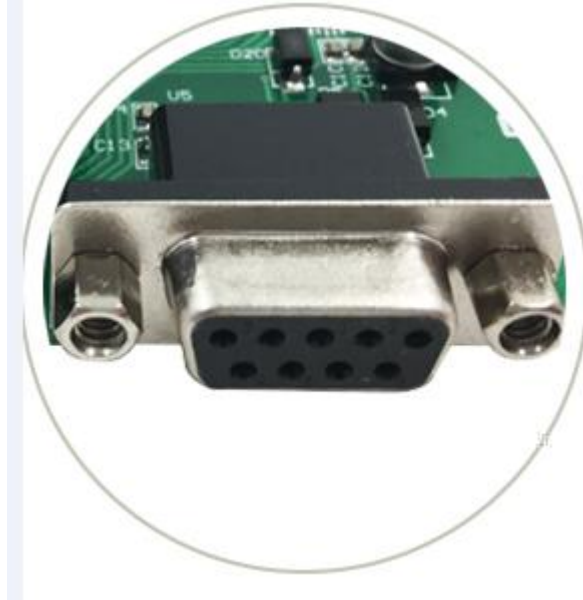
- 485
- DC7-30
-
-
- 485 232
- 2400,4800,9600,19200,38400
- 38400
-
- 0-255
-
-
-
-
- 5-24
-
- 2 4-20 /0-10 /0-5



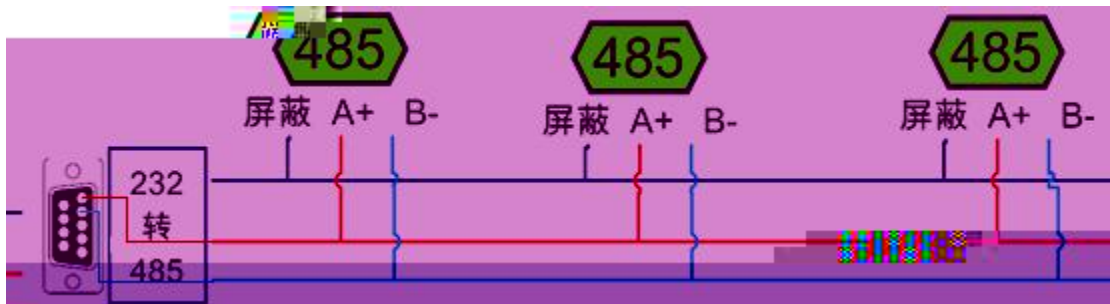
1 R 232

232

DB9



2 R 485



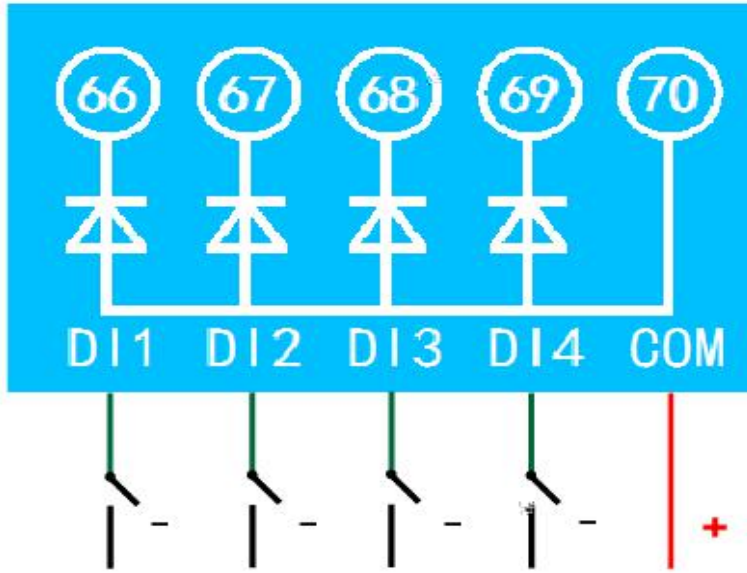
232 232-485 485

485 A B A A B B 485

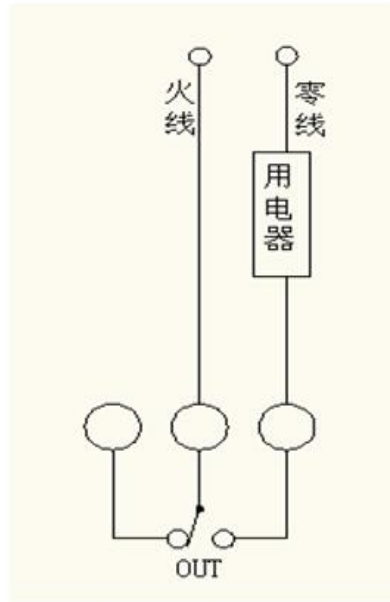
D

1

4 C C ,



2



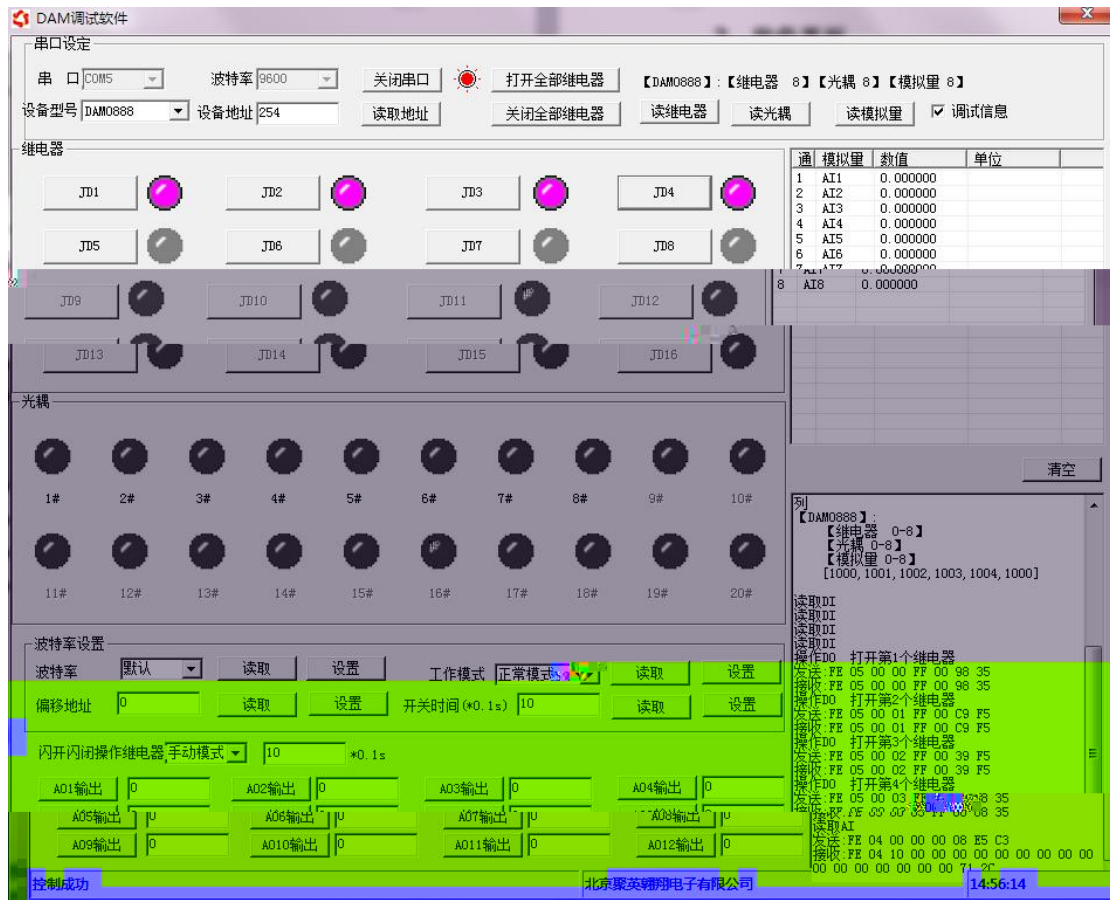
3

4 A 1 A 2 A 3 A 4

10



2



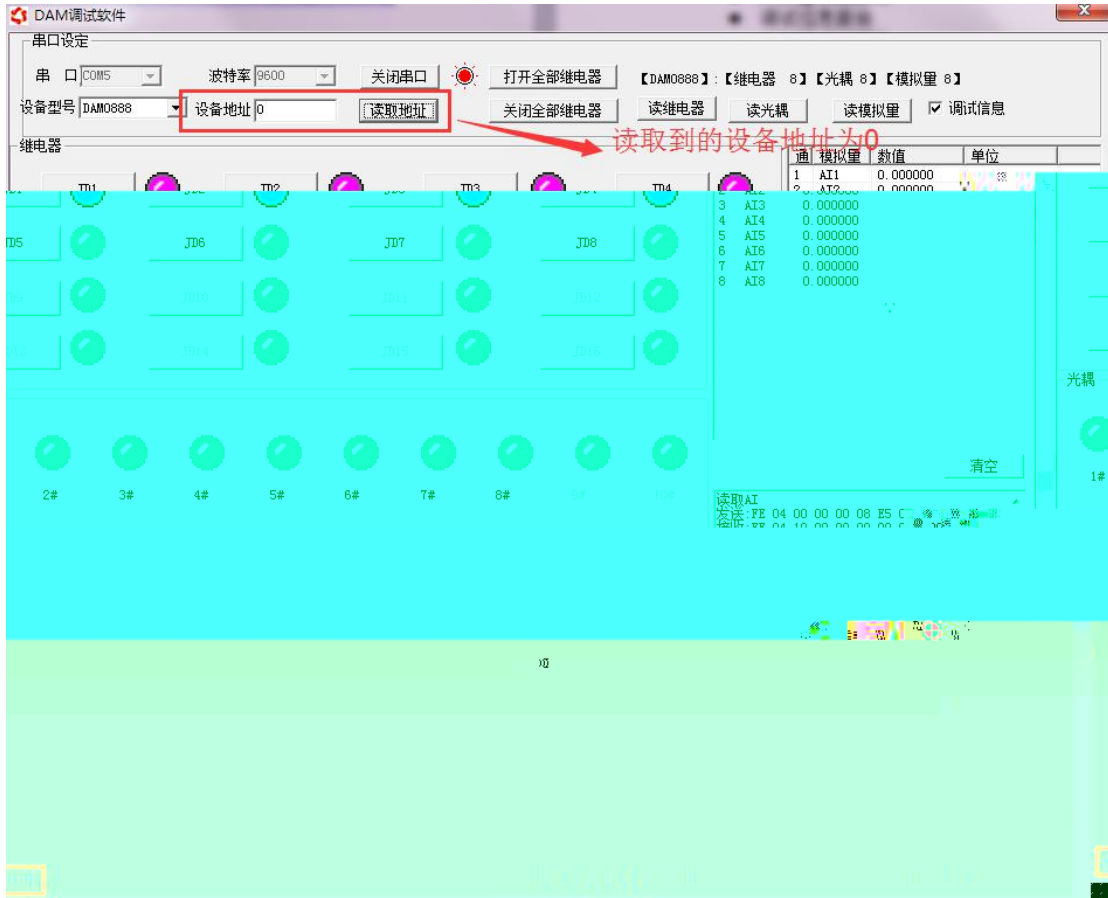
-
-
-
-
-
-
-
-

3

-
-
-

254

0



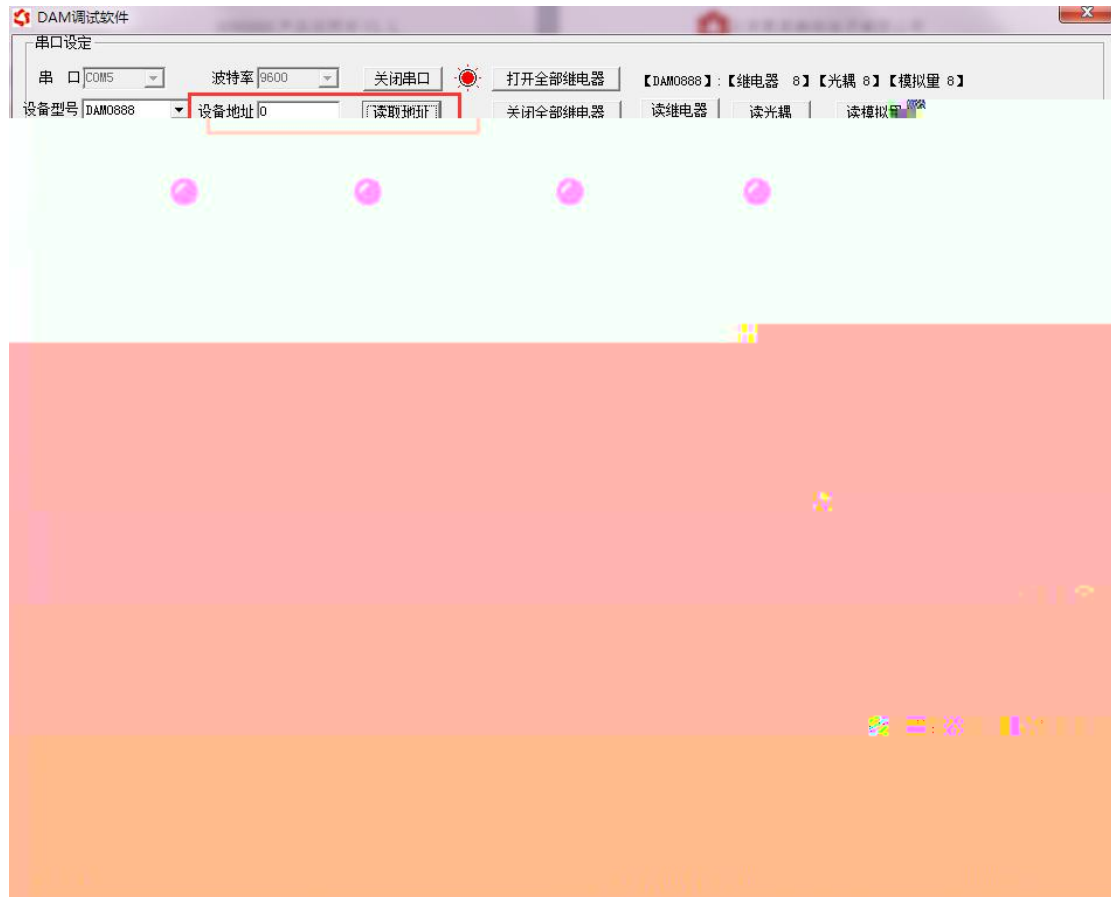
1

DA

0

254

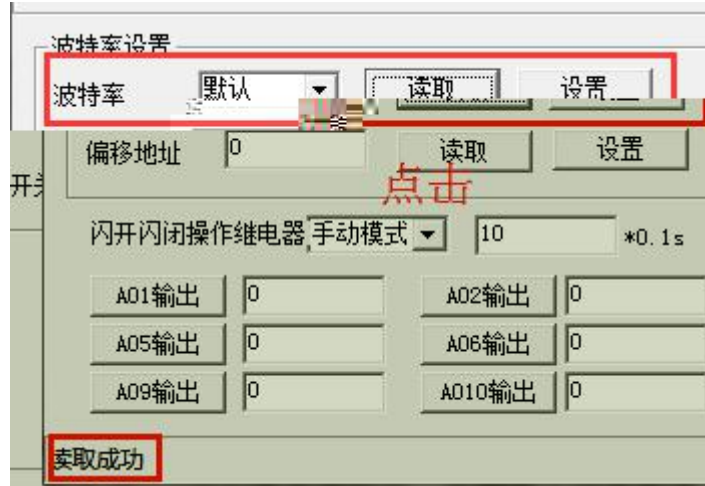
254



DA



2



3

= *0.1
 1
 1.
 = *0.1



1

DB

17		1 0017	
18		1 0018	
19		1 0019	
20		1 0020	
1	4	3 0001	
2		3 0002	
3		3 0003	
4		3 0004	
5		3 0005	
6		3 0006	
7		3 0007	
8		3 0008	
9		3 0009	
10		3 0010	
11		3 0011	
12		3 0012	
13		3 0013	
14		3 0014	
15		3 0015	
16		3 0016	
		4 1001	0
			0-5
			232
			485
		4 1002	
		4 1003	= +
		4 1004	
		4 1005	

00001 09999 ()
 10001 19999 ()
 30001 39999 ()
 40001 49999 ()
 5 4

	FE 01 00 00 00 08 29 C3
	FE 01 01 00 61 9C
	FE 05 00 00 FF 00 98 35
	FE 05 00 00 FF 00 98 35
	FE 05 00 00 00 00 D9 C5

AD 24	C C16	
-------	-------	--

FE 05 00 00 FF 00 98 35

FE		
05	05	
00 00		
FF 00		
98 35	C C16	6 C C16

FE 05 00 00 FF 00 98 35

FE		
05	05	
00 00		
FF 00		
98 35	C C16	6 C C16

FE		
01	01	
00 00		
00 08		
29 C3	C C16	6 C C16

FE 01 01 00 61 9C

FE		
01	01	0 81
01		1+(-1)/8
00		B 0: B 1: B 7:

61 9C	C C16	6	C C16
-------	-------	---	-------

FE			
02	02)
00 00			
00 14			
6C 0A	C C16		

FE 02 03 00 00 01 AD 81

FE			
02	02		0 82
03			1+(-1)/8
00			
00		B 0:	
01		B 1:	
		B 20	
50 5C	C C16		

FE			
10	10		
00 03			
00 02			
04			1+(-1)/8
00 04 00 02		00 04	00 02
00 0A		00 0A	10
		0.1 *10	
00 D8	C C16		

FE		
10	10	0 82
00 03		
00 02		
A5 C7	C C16	

FE		
0F		0 82
00 08		
01		
FF 00		FF 00
	C C16	

FE		
0F		0 82
00 08		
	C C16	

232

D D



