



-
-
-
-

-
-
-
-

--	--

--

⑥ ⑦ ⑧ ⑨ ⑩ ⑪ ⑫ ⑬ ⑭ ⑮ ⑯ ⑰ ⑱

DA1 DA2 GND DA3 DA4 GND DA5 DA6 GND DA7 DA8 GND DA9 DA10

JY-DAM10DA
JUYING ELECTRONIC

模拟量输出板

- 供电电压：DC 12-30V
- 输出：10路 20mA 5V 10V
- 通信协议：MODBUS RTU/ASCII
- 通信端口： RS232 RS485 RF
 网口 WIFI USB

电源 RS485 地址

+ - A+ B- PB 1-32

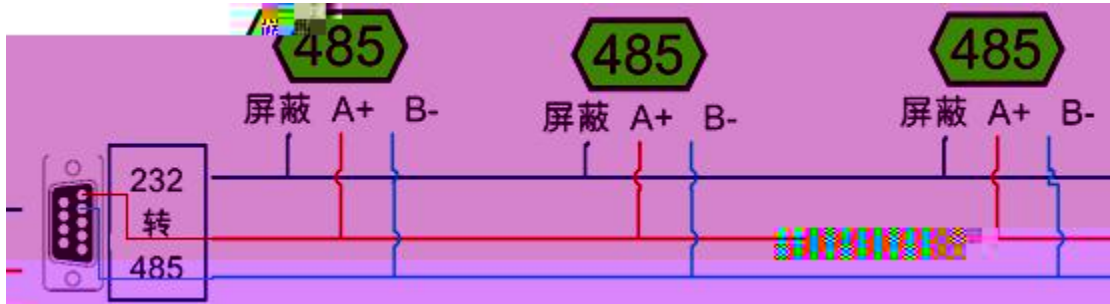
1 2 3 1 2 3

RS232

1 R 232

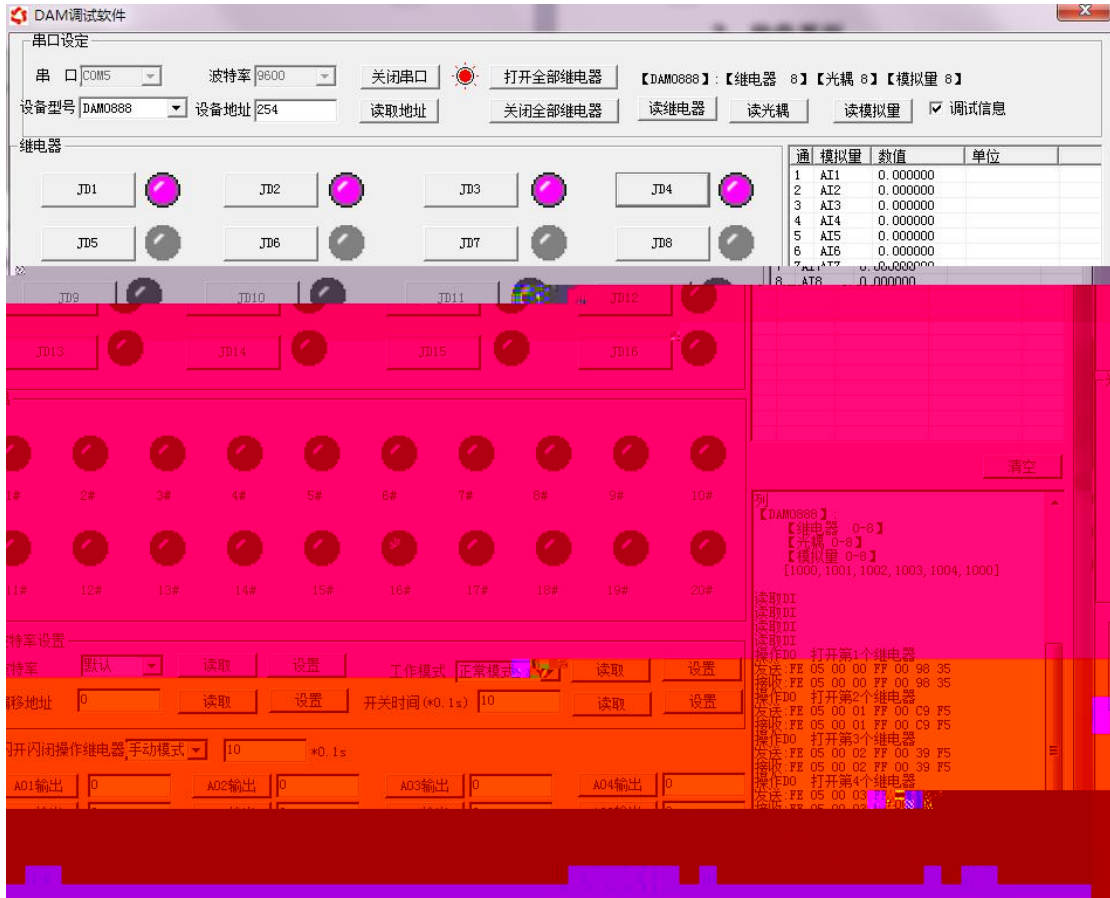


2 R 485



1

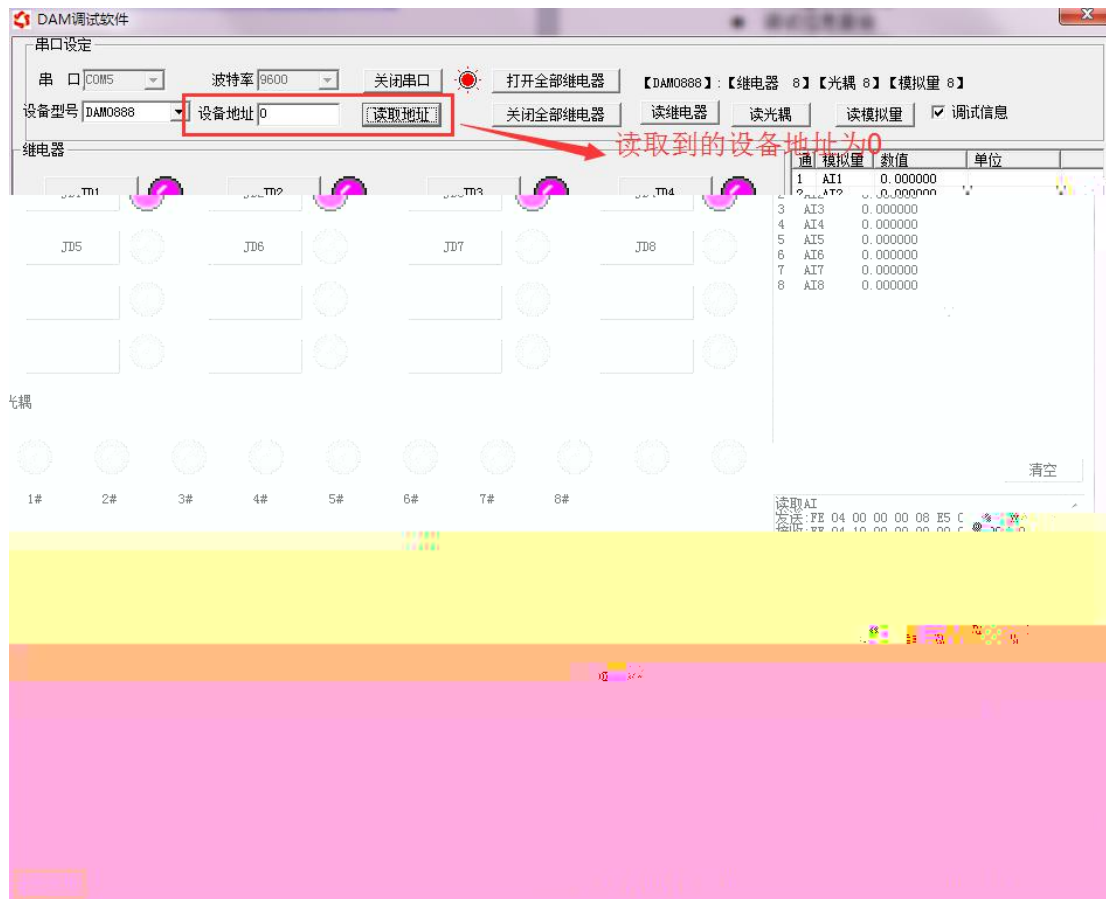
2



-
-
-
-
-
-
-
-
-

3

-
-
-

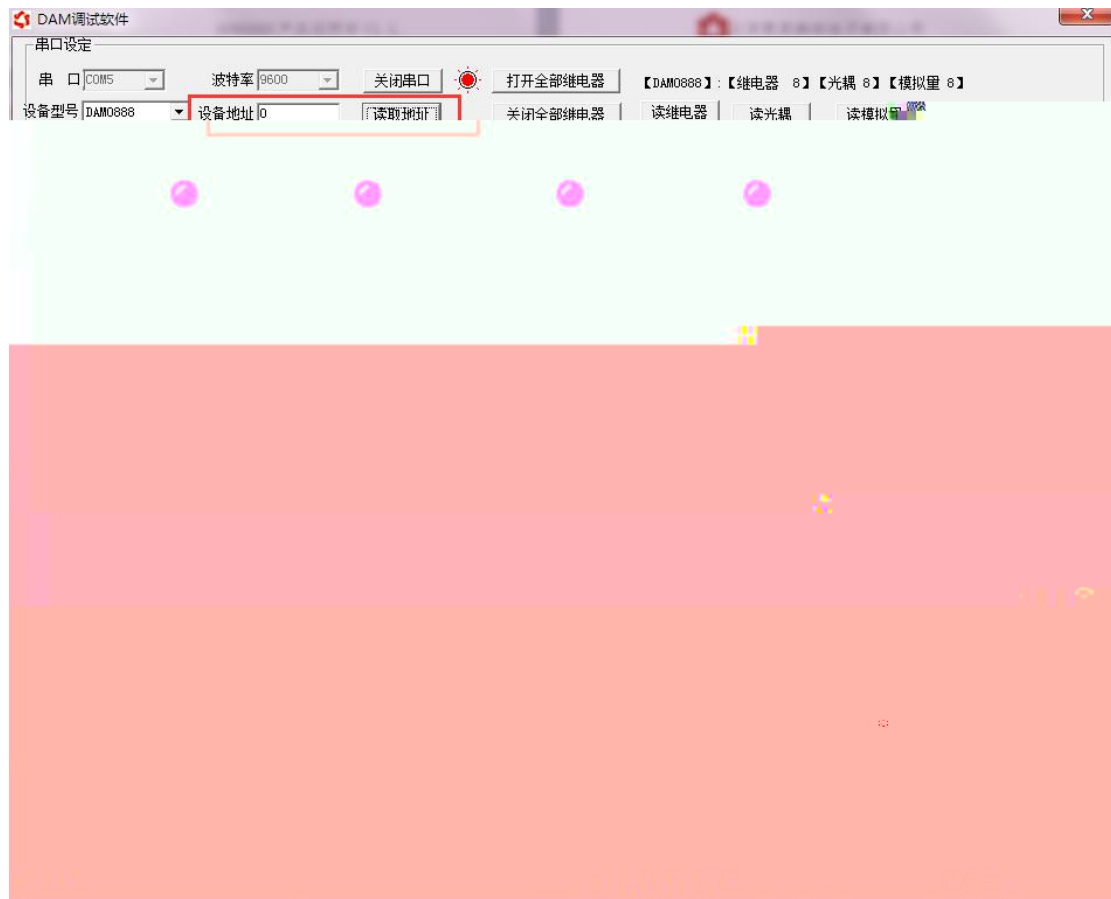


1

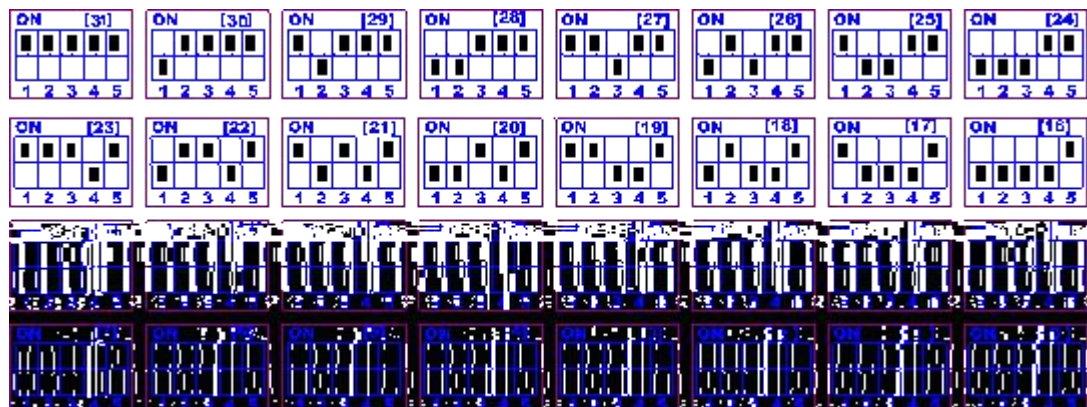
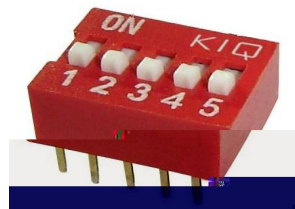
1.1

= +

1.2



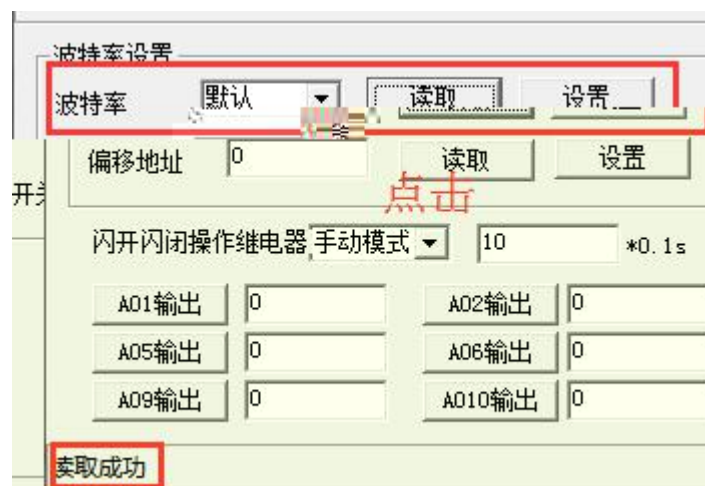
1.3



1.4



2



1

2 M

5

1. 232

2.485 1 254 1
1

