



DAM0816D-NET



2016 01



	1
	1
	1
	1
	2
	2
1	2
2	3
3	3
4	3
	3
	4
1	4
2	4
	5
1	5
2	Modbus	5
3	7
4	8
5	9
	11
1	11
2	12
3	12
	13



- DC7-30V
-
- RJ45
- 2400,4800,9600,19200,38400
- 9600
- modbus RTU

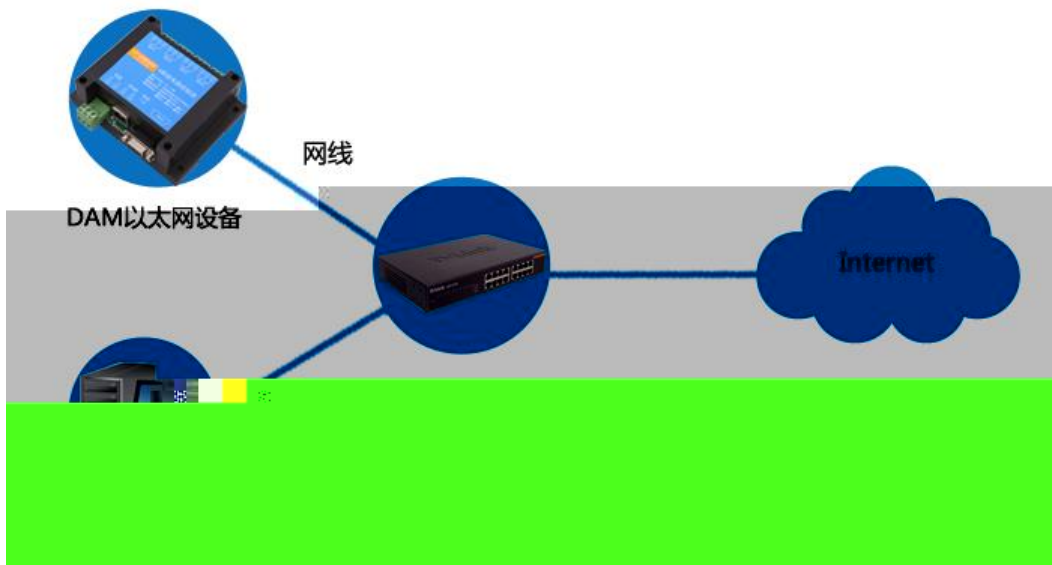
- 16 5-24V
- 8

	modbus	RS232	RS485	USB	RJ45		
DAM0816D-NET						8	16

10A/30VDC 10A/2

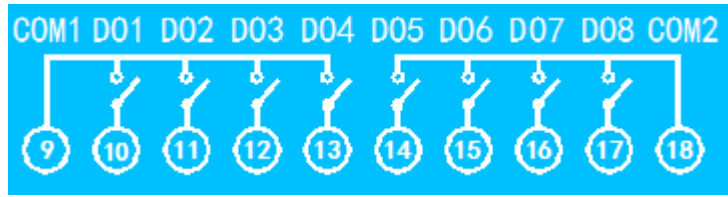


1

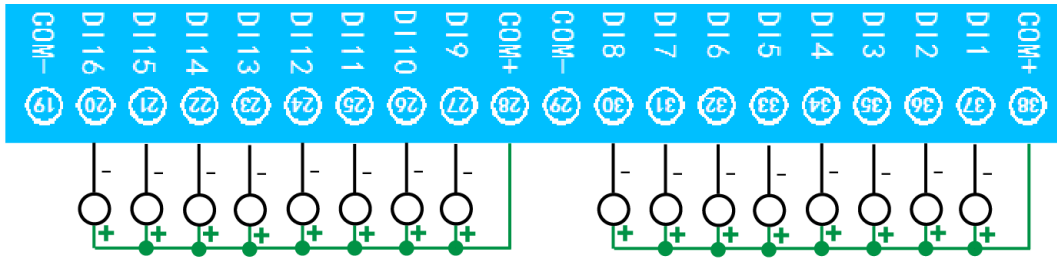




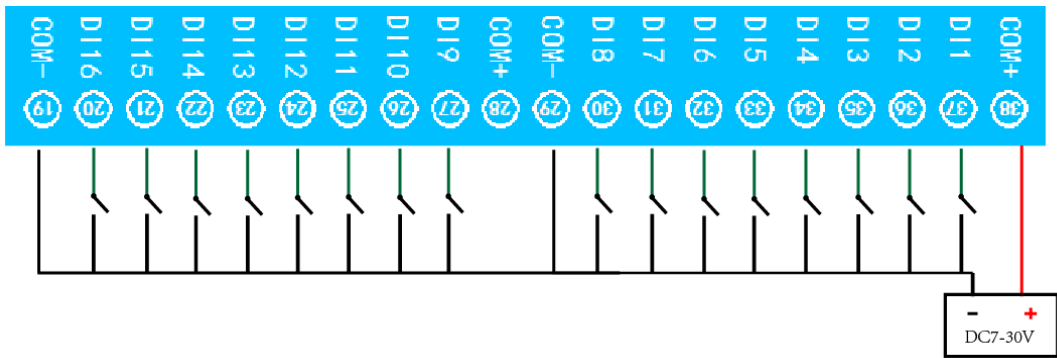
2



3



4

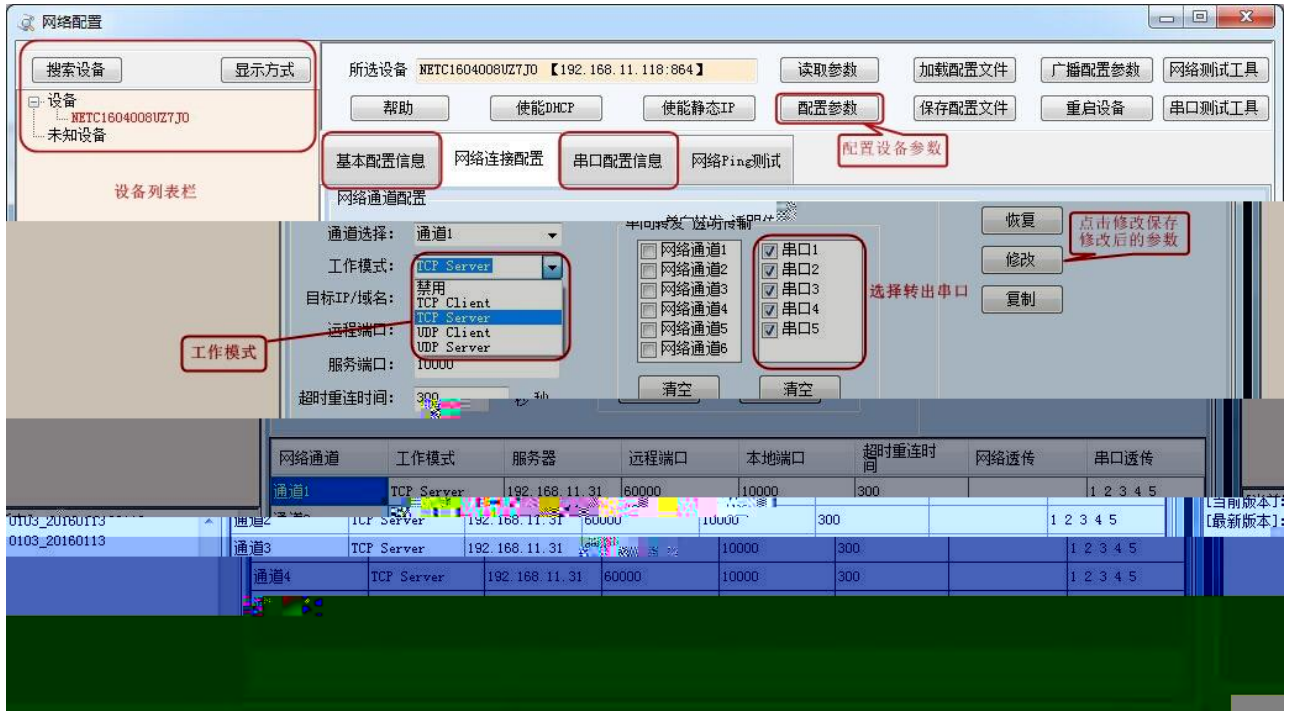


"

"

"

<https://www.juyingele.com/download/JYNetConfig.zip>



1

= *0.1

1

1.



1

modbus MODBUS

Modbus

https://www.juyingele.com/download/Modbus_poll.zip

modbus RTU

2 Modbus

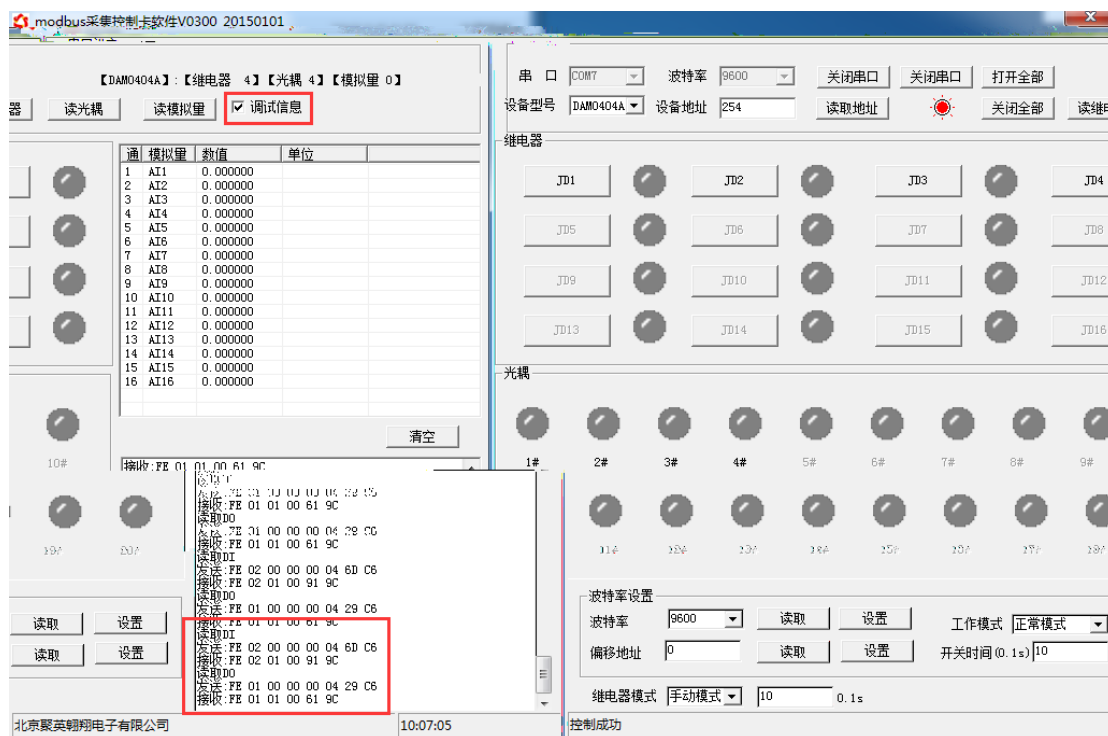
2 4

2	
4	AD

1	50000	
2	50001	



3	50002	
4	50003	
5	50004	
6	50005	
7	50006	
8	50007	
1	20000	
2	20001	
3	20002	
4	20003	
5	20004	
6	20005	
7	20006	
8	20007	
9	20008	
10	20009	
11	20010	
12	20011	
13	20012	y6V



modbus

modbus

1

1

0001

4

	RTU	16
	FE 01 00 00 00 08 29 C3	
	FE 01 01 00 61 9C	
	FE 05 00 00 FF 00 98 35	
	FE 05 00 00 FF 00 98 35	
	FE 05 00 00 00 00 D9 C5	
	FE 05 00 00 00 00 D9 C5	
	FE 05 00 01 FF 00 C9 F5	
	FE 05 00 01 00 00 88 05	
	FE 05 00 02 FF 00 39 F5	
	FE 05 00 02 00 00 78 05	
	FE 05 00 03 FF 00 68 35	
	FE 05 00 03 00 00 29 C5	
	FE 05 00 04 FF 00 D9 F4	
	FE 05 00 04 00 00 98 04	
	FE 05 00 05 FF 00 88 34	
	FE 05 00 05 00 00 C9 C4	



	FE 05 00 06 FF 00 78 34
	FE 05 00 06 00 00 39 C4
	FE 05 00 07 FF 00 29 F4
	FE 05 00 07 00 00 68 04
	FE 02 00 00 00 10 6D C9
	FE 02 02 00 00 AD AC

5

5.1

4

FE 01 00 00 00 04 29 C6

FE			
01	01		
00 00			
00 04			
29 C6	CRC16	6	CRC16

FE 01 01 00 61 9C

FE			
01	01		0x81
01			$1+(n-1)/8$
00		Bit0: Bit1: Bit7:	
61 9C	CRC16	6	CRC16

5.2

FE 02 00 00 00 10 6D C9

FE			
02	02)
00 00			
00 10			
6D C9	CRC16		

FE 02 02 00 00 AD AC

--	--	--	--



FE		
02	02	0x82
02		1+(n-1)/8
00 00		Bit0: Bit1: Bit7: . Bit15: 16
AD AC	CRC16	

5.3

FE 10 00 03 00 02 04 00 04 00 0A 00 D8
FE 10 00 03 00 02 04 00 02 00 14 21 62

FE		
10	10	
00 03		
00 02		
04		1+(n-1)/8
00 04 00 02		00 04 00 02
00 0A		00 0A 10 0.1 *10
00 D8	CRC16	

FE 10 00 03 00 02 A5 C7

FE		
10	10	0x82
00 03		
00 02		
A5 C7	CRC16	

5.4

2 2 16 2 1 0
 2 1111, 16 0F FF

FE 0F 00 00 00 04 01 FF 31 D2
FE 0F 00 00 00 04 01 00 71 92



FE		
0F	0F	0x82
00 00		
00 04		
01		
FF 00		FF 00
31 D2 71 92	CRC16	

FE 0F 00 00 00 04 40 07

FE 0F 00 00 00 04 40 07

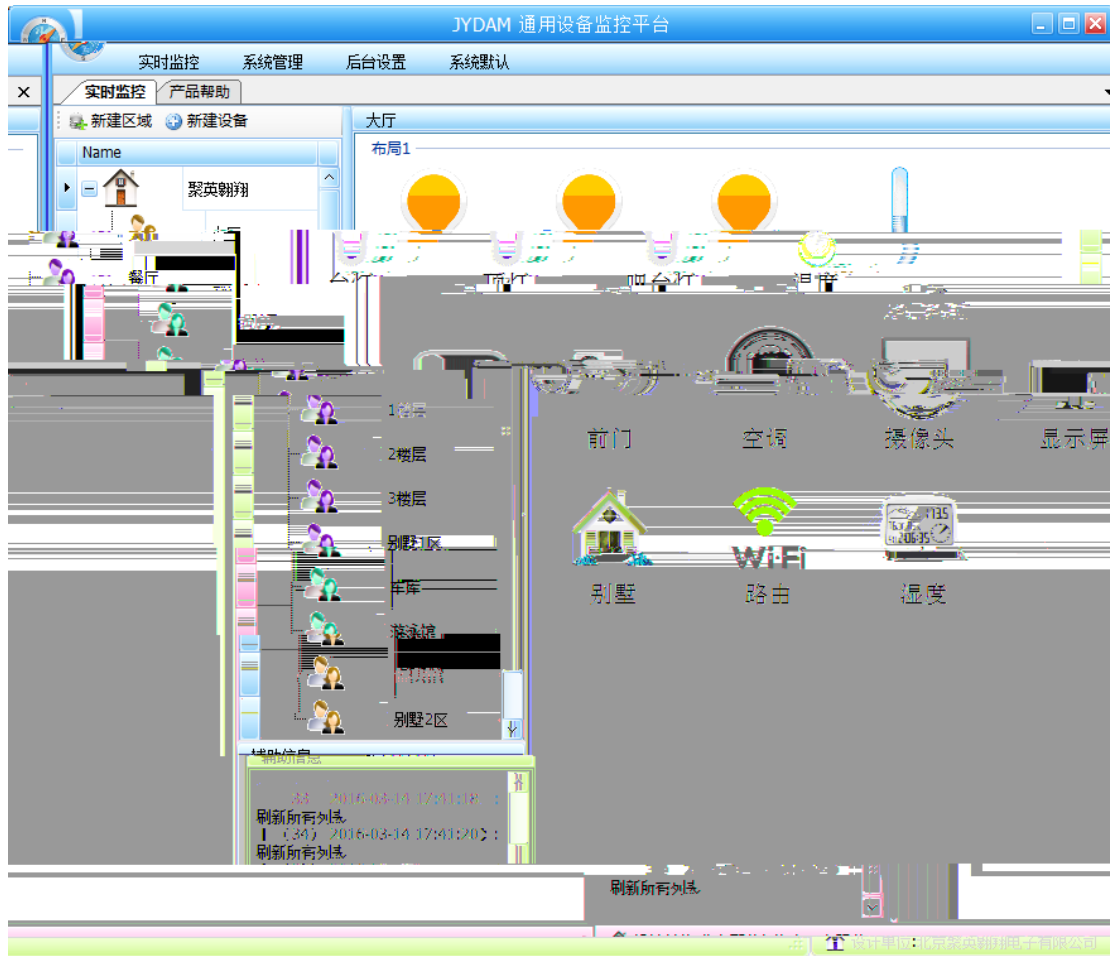
FE		
0F	0F	0x82
00 00		
00 04		
40 07	CRC16	

1

<http://pan.baidu.com/s/1ntPZK4h>



2



DAM

WiFi

excel

- 1.
- 2.
- 3.
- 4.
- 5.
- 6.
- 7.
- 8.

3

[.pdf](#)



1)

DHCP



PC

PC
PC
PC

IP



基本配置信息	网络连接配置	串口配置信息
基本信息		
唯一ID:	JYUNID	
产品型号:	JYUNID	
系统版本:	JYUNID	
设备名称:	JYNet-002	
设备地址:	200	
网络配置		
MAC地址:	ff ff ff ff ff ff (?)	
DHCP服务:	静态IP	
静态 IP:	192 . 168 . 3 . 232	
子网掩码:	255 . 255 . 255 . 0 (?)	
网 关:	192 . 168 . 3 . 1 (?)	
点击两次		
<input type="button" value="读取参数"/> <input type="button" value="下载参数"/> <input type="button" value="高级配置"/>		

2

IP

IP

DHCP