

DAM0404

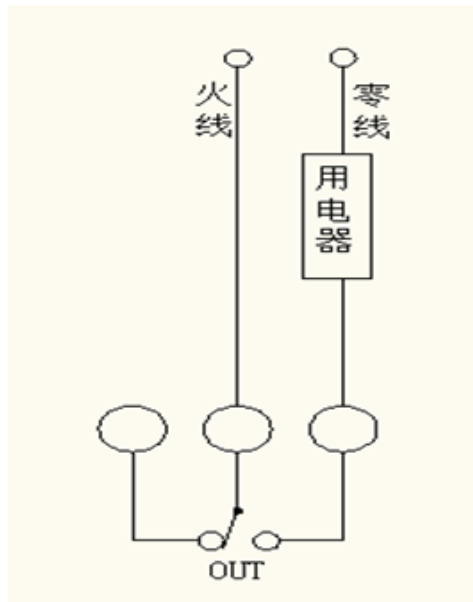


2015 01

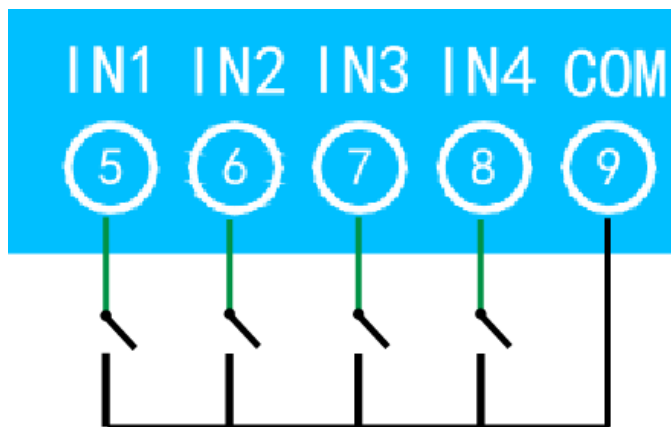
	1
	1
	1
	1
	2
	4
1	4
2 !	
3	4
	4
1	4
2	5
3	5
	6
1	6
1.1	6
1.2	7
2	9
2.1	9
3	10
	12
1	12
2 Modbus	12
3	13
4	14
5	15
	18

- DC7-30V
-
- RS485 RS232
- 2400,4800,9600,19200,38400

1

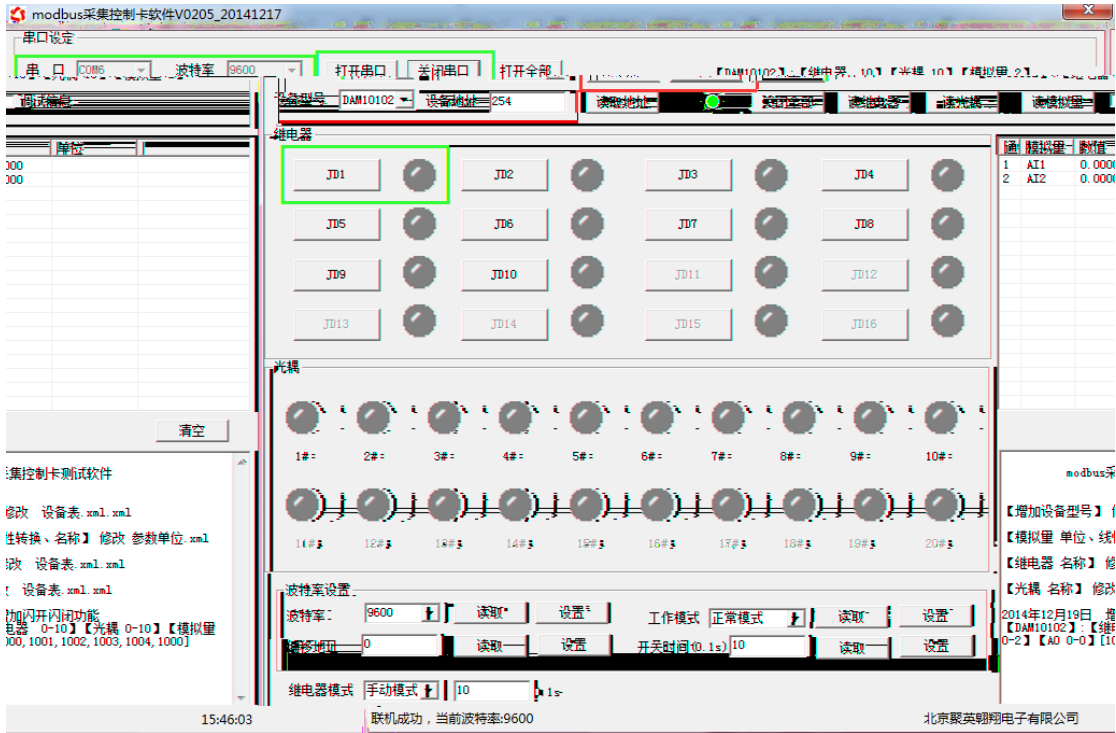


2



1

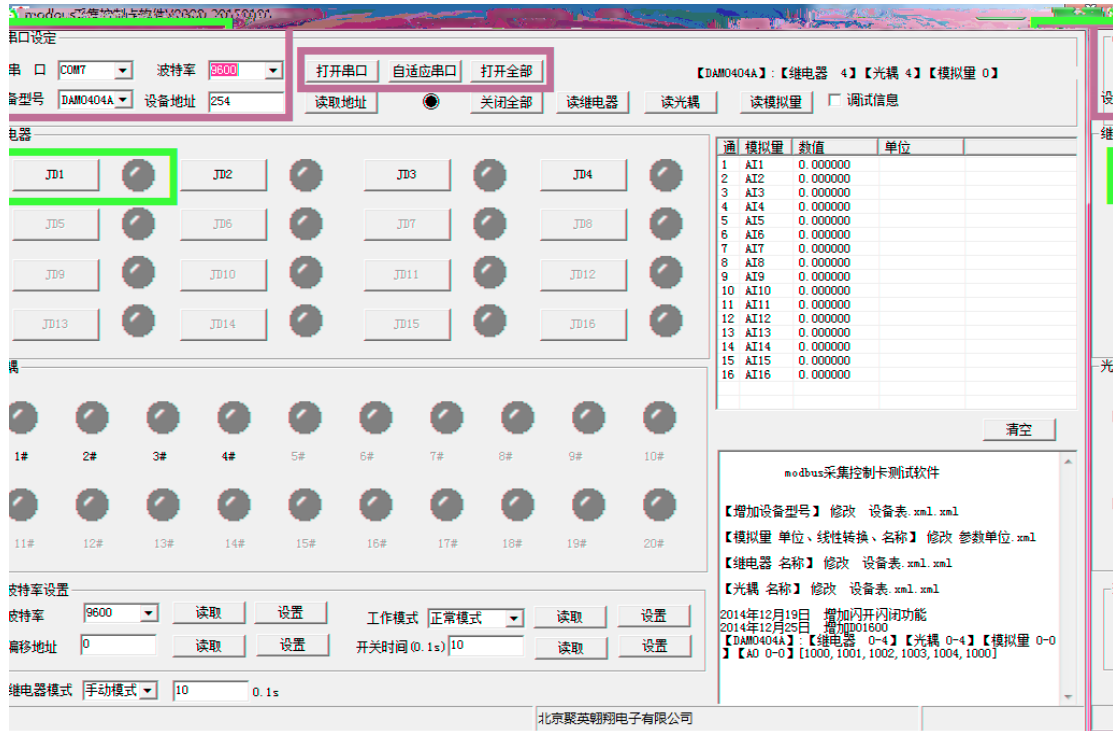
Žžž! "#\$\$ %&'()*+,-./:;=<=>?@A B C D E F G H I J K L M N O P Q R S T U V W X Y Z [\] ^ _ ` { | } ~ ¡ ¢ £ ¤ ¥ ¦ § ¨ © ª « ¬ ® ¯ ° ± ² ³ ´ µ ¶ · ¸ ¹ º » ¼ ½ ¾ ¿



1

1.1

Žžž! " #\$\$ % ^ _ ` | / ~ f\ ~ flk! \$% & ~ flk&,\$+, - / ž. ě ~ / ě ĭ ~ * !
 " DAM " COM
 9600
 " 254" 254
 4 " JD1"

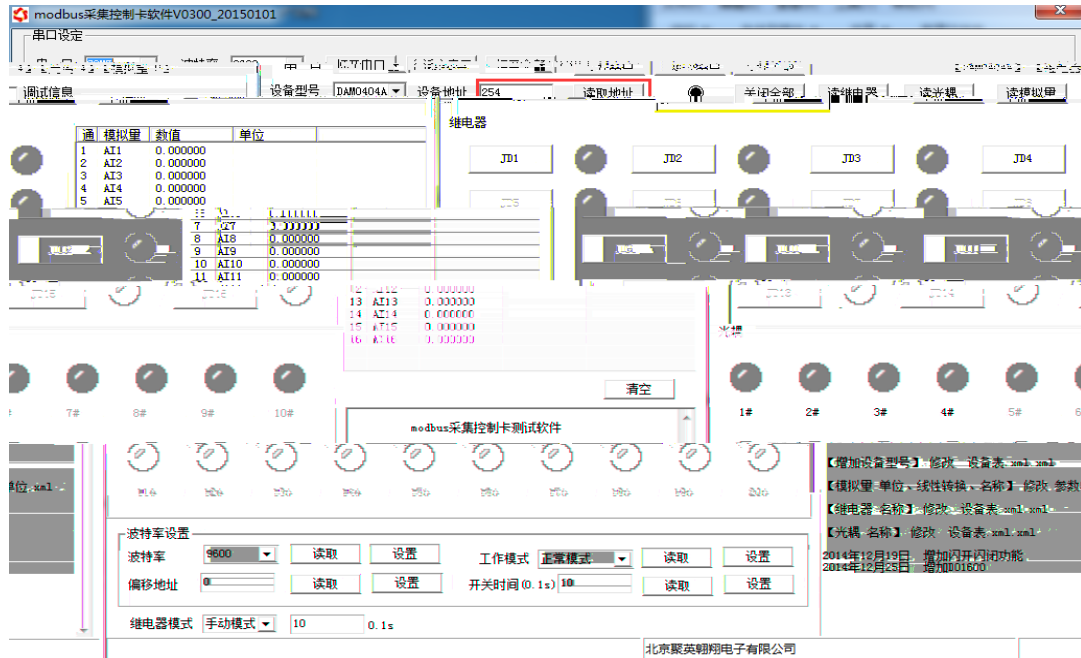


1.2

1.2.1

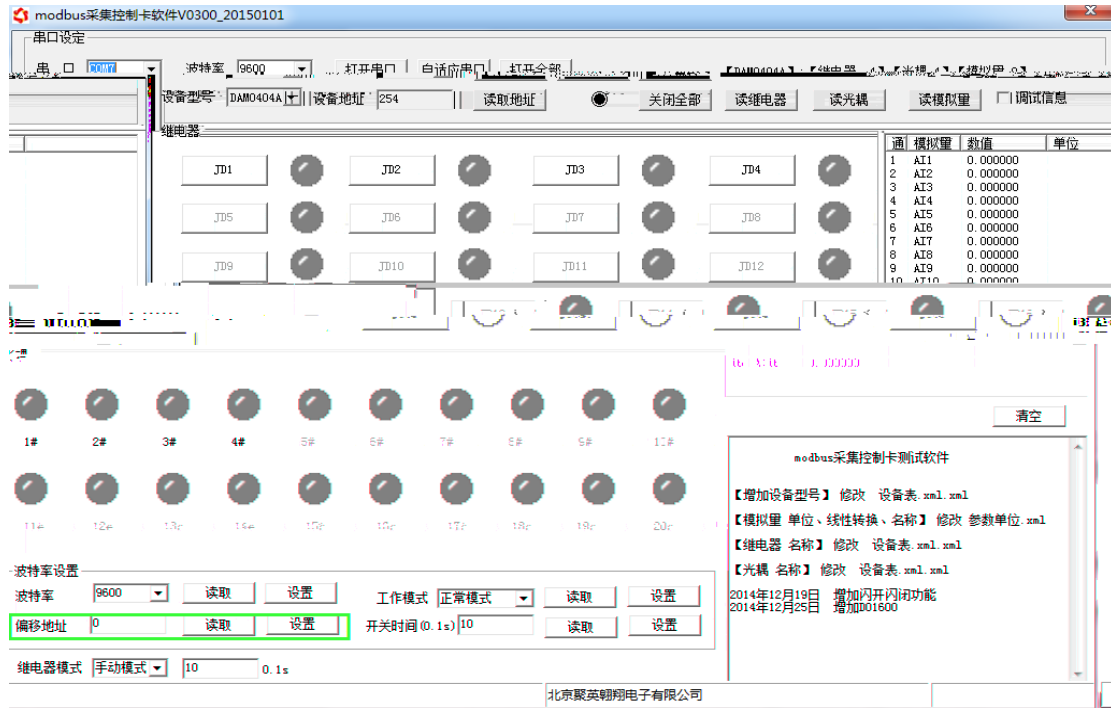
+

1.2.2

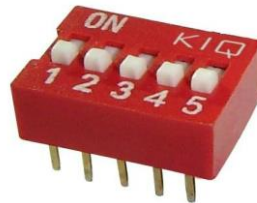


1.2.3

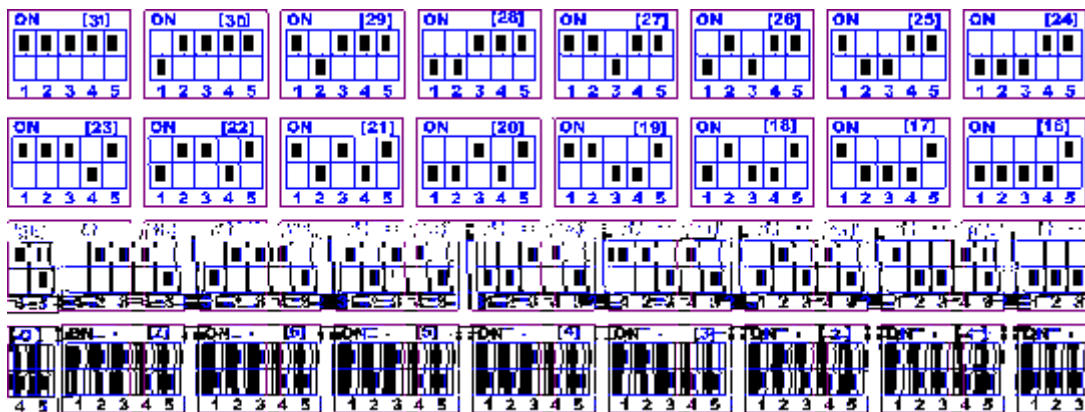
“ ” “ ” “ ” “ ”



1.2.4

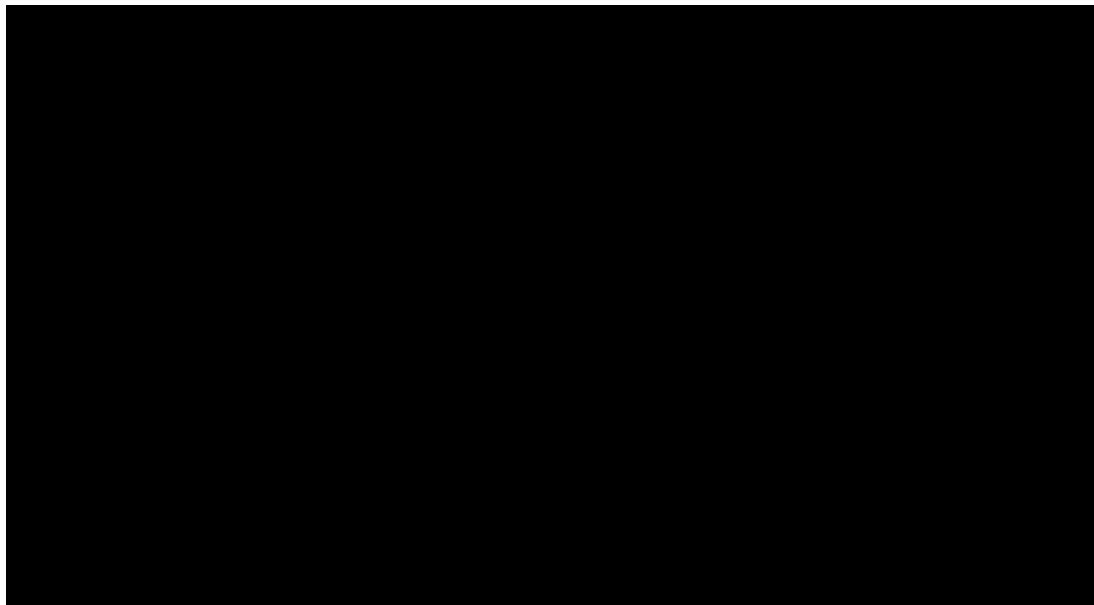


- 1 " ON" " 31"
- 2 " OFF" " 0"
- 3 1
- 4



1.2.5

" " " "



2

2.1

2.1.1

—>

—>

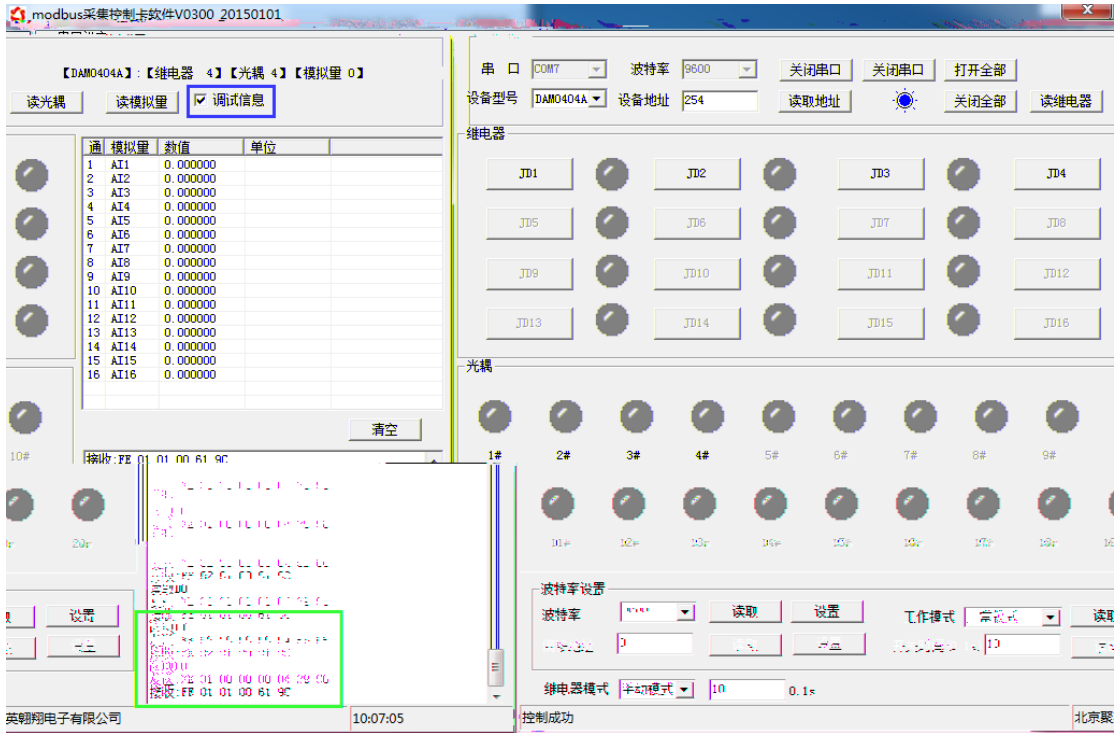
0.05

2.1.2

—>

—>





modbus

modbus

1

1

0001

4

5.2

4
FE 01 00 00 00 04 29 C6



5.4

FE 10 00 03 00 02 04 00 04 00 0A 00 D8
 FE 10 00 03 00 02 04 00 02 00 14 21 62

FE			
10	10		
00 03			
00 02			
04			1+(n-1)/8
00 04 00 02		00 04 00 02	
00 0A		00 0A	10
		0.1 *10	
00 D8	CRC16		

FE 10 00 03 00 02 A5 C7

FE			
10	10		0x82
00 03			
00 02			
A5 C7	CRC16		

5.5

2 2 16 2 1 0
 2 1111,16 0F FF

FE 0F 00 00 00 04 01 FF 31 D2
 FE 0F 00 00 00 04 01 00 71 92

FE			
0F	0F		0x82
00 00			
00 04			
01			
FF 00		FF 00	
31 D2 71 92	CRC16		

FE 0F 00 00 00 04 40 07

--	--	--	--

