

DAM0400C WFI

V1.0



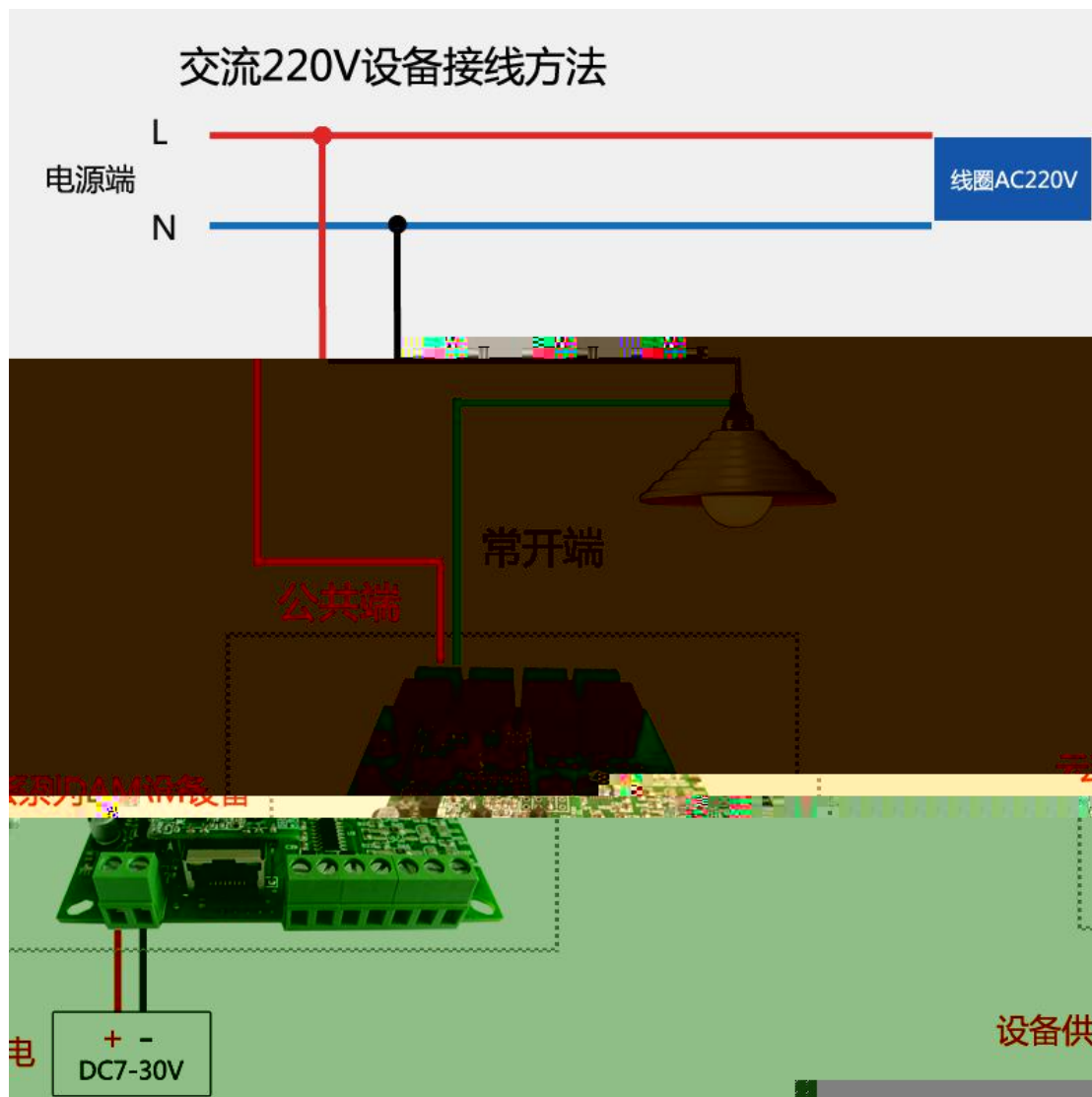
	1
	1
	1
	1
	
1	RS485	
	2
1	2
	2
1	2
2	3
3	3
	4
1	
2	4
3	5
	6
1	6
2	Modbus	6
3	7
4	8
5	8
	10
	11

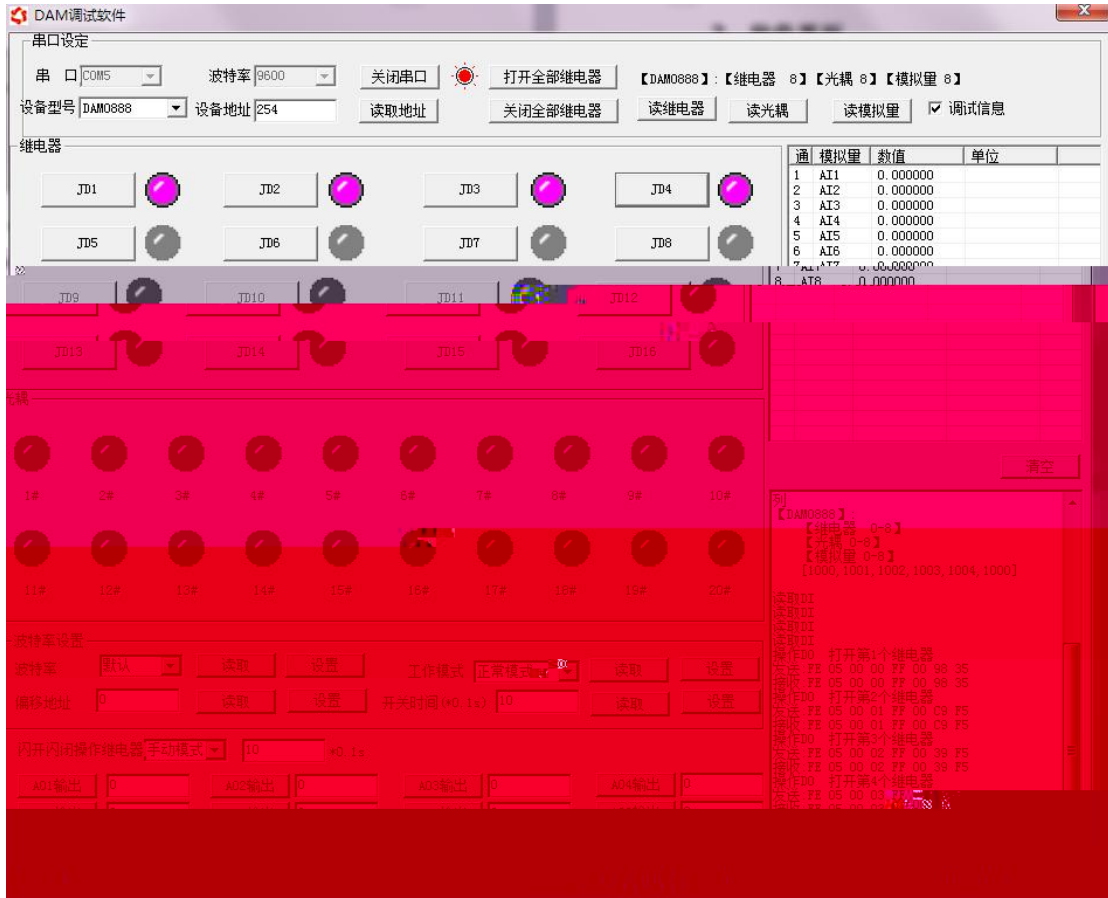
- DC12-30V
- HFE10-2
- RS485
- 2400,4800,9600,19200,38400 9600
- modbus RTU
- 0-255 5 1-31 31
-
-
-
-
-
-
-
-
-

	modbus	RS232	RS485	USB	WFi	
DAM400C- RS485						4

	50A/277VAC
	10
	RS485
	DC 12- 30V
	1 LED
	4 LED
	- 40 85
	159*87. 5mm
	9600, n, 8, 1
	2400,4800,9600,19200,38400
	Labvi ewd

<http://www.juyingele.com.cn/zlxz/danziliao/990.html>





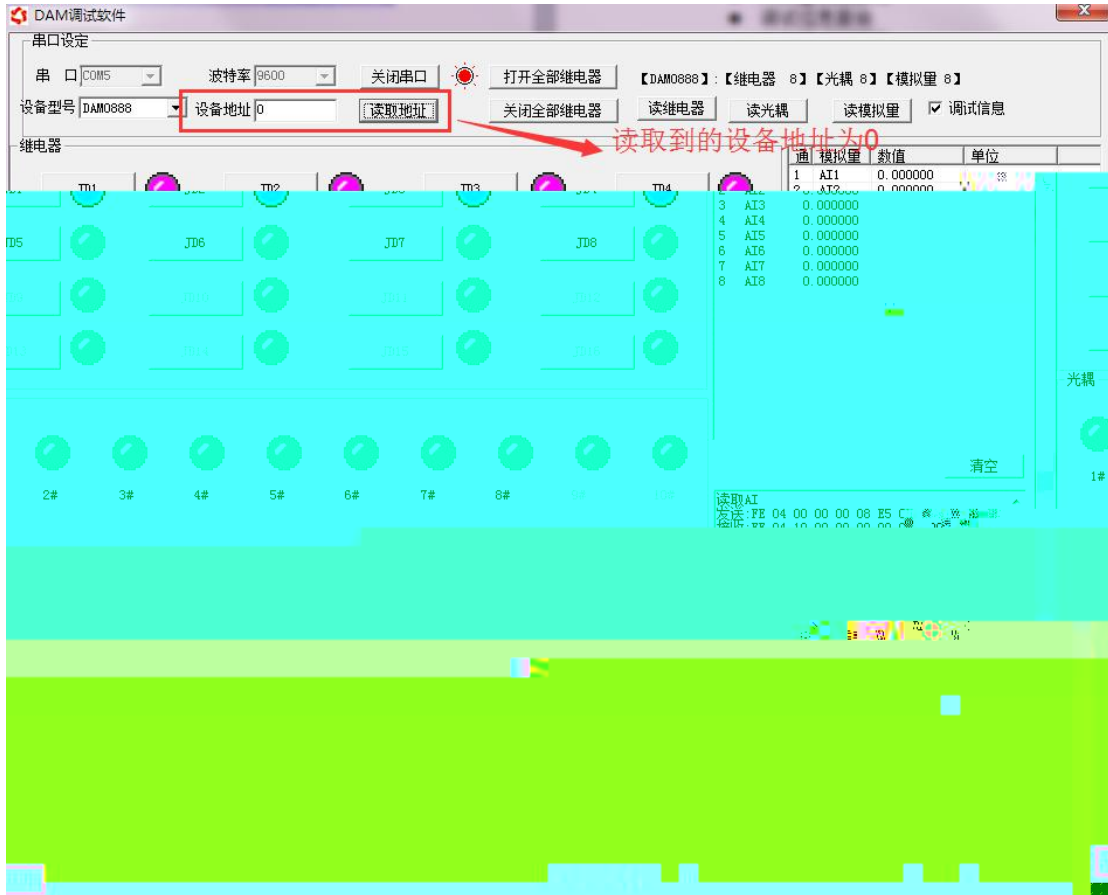
-
-
-
-
-
-
-
-
-
-

- ①
- ②
- ③

254

" " " "

" 0"



1

LED

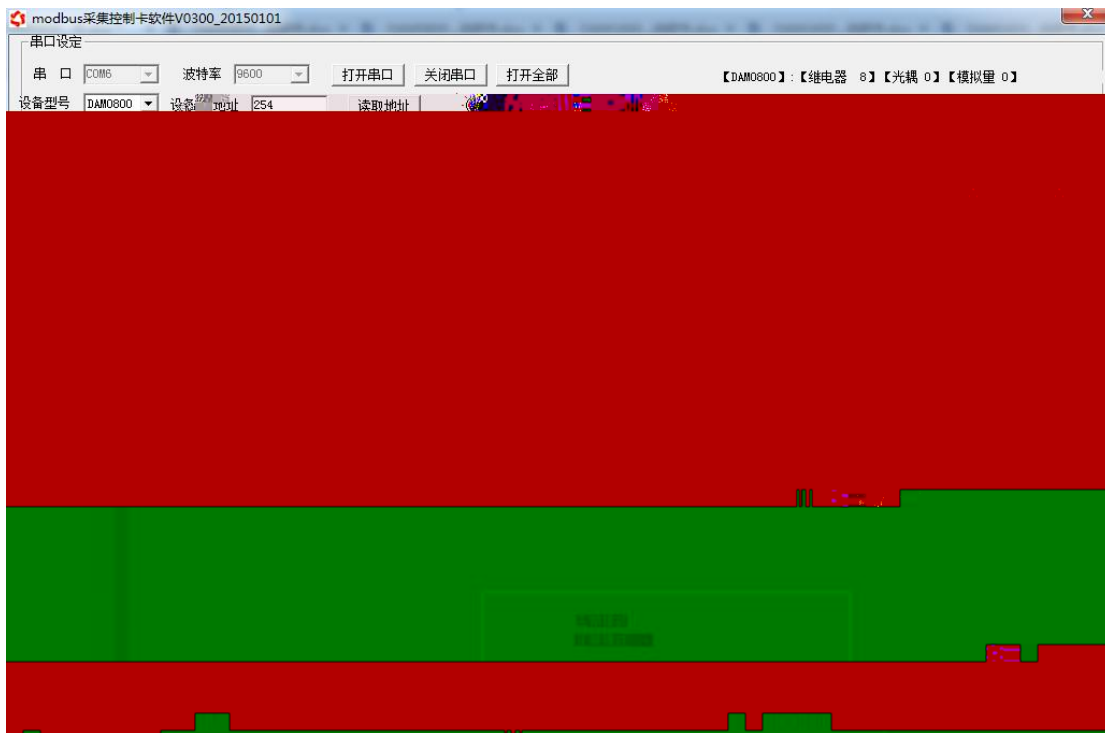
LED

" "

10

1 --> --> 1 2 --> --> 2
3 --> -->.....

" DAM " " " " "



= *0.1 1
1.

" DAM " = *0.1

00001 09999 ()
 10001 19999 ()
 30001 39999 ()
 40001 49999 ()
 G.H 5 4 1 0
 00001 0000

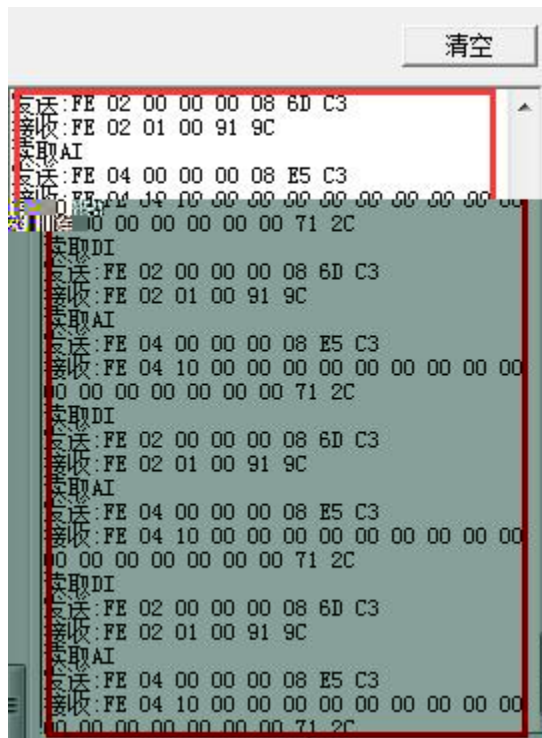
0	9600
1	2400
2	4800
3	9600
4	19200
5	38400

00002

00001-30000

0

0000



modbus

modbus

1

1

00001

	RTU 16
	FE 01 00 00 00 08 29 C3
	FE 01 01 00 61 9C
	FE 05 00 00 FF 00 98 35
	:FE 05 00 00 FF 00 98 35
	FE 05 00 00 00 00 D9 C5
	FE 05 00 00 00 00 D9 C5
	FE 05 00 01 FF 00 C9 F5
	FE 05 00 01 00 00 88 05
	FE 05 00 02 FF 00 39 F5
	FE 05 00 02 00 00 78 05
	FE 05 00 03 FF 00 68 35
	FE 05 00 03 00 00 29 C5

1

FE 05 00 00 FF 00 98 35



FE			
05	05		
00 00			
FF 00			
98 35	CRC16	6	CRC16

FE 05 00 00 FF 00 98 35

FE			
05	05		
00 00			
FF 00			
98 35	CRC16	6	CRC16

8

FE 01 00 00 00 08 29 C3

FE			
01	01		
00 00			
00 08			
29 C3	CRC16	6	CRC16

FE 01 01 00 61 9C

FE			
01	01		0x81
01			$1+(n-1)/8$
00		Bit0: Bit1: Bit7:	
61 9C	CRC16	6	CRC16

FE 10 00 03 00 02 04 00 04 00 0A 00 D8

FE 10 00 03 00 02 04 00 02 00 14 21 62

FE			
10	10		

00 03			
00 02			
04			1+(n-1)/8
00 04 00 02		00 04 00 02	
00 0A		00 0A	10
		0.1 *10	
00 D8	CRC16		
	00 02 A5 C7		
FE			
10	10		0x82
00 03			
00 02			
A5 C7			

)

*FE OF 00 00 00 08 01 FF F1 D1
FE OF 00 00 00 08 01 00 B1 91*

FE			
0F	0F		0x82
00 00			
00 08			
01			
FF 00		FF FF	00 00
<i>F1 D1 B1 91</i>	CRC16		

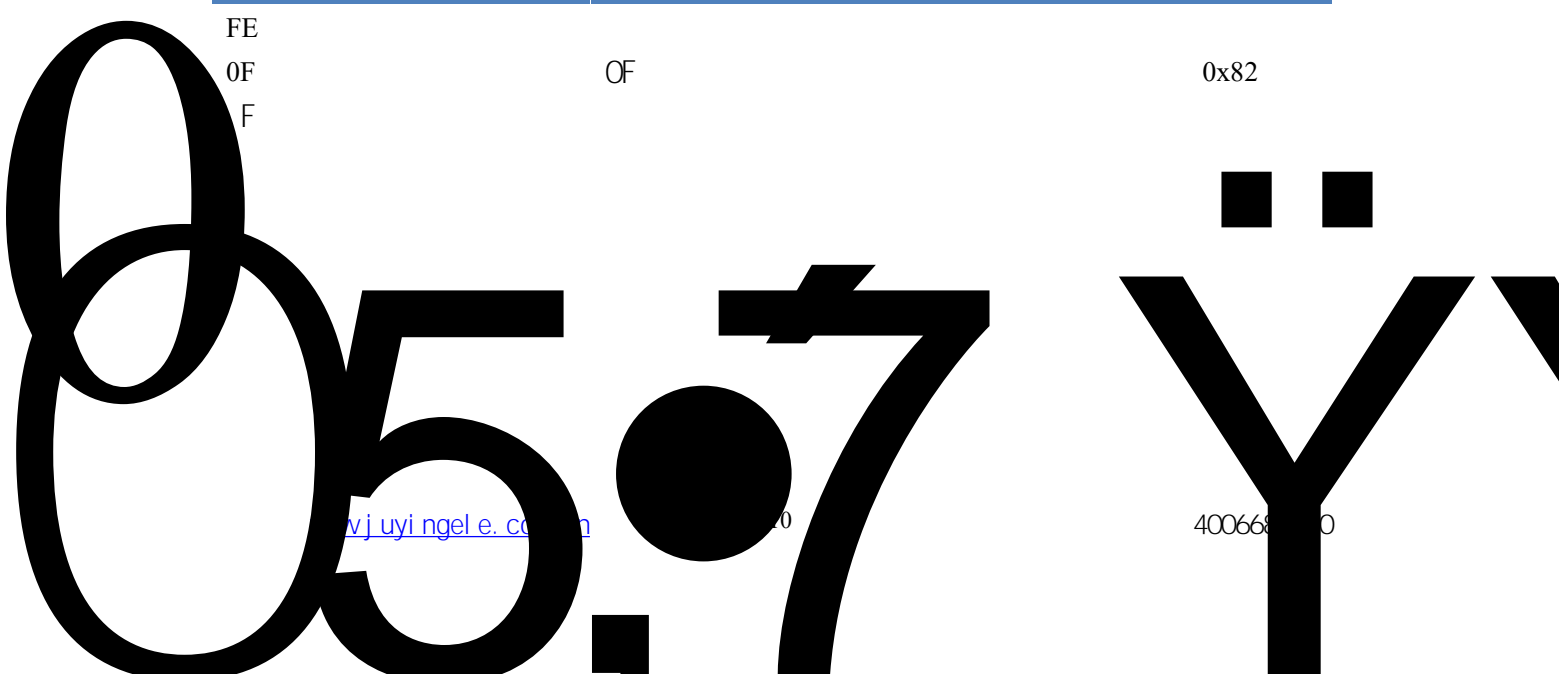
*FE OF 00 00 00 0A C1 C3
FE OF 00 00 00 08 40 02*

--	--	--	--

FE
0F
F

OF

0x82



30s

400-6688-400

JYDAM

<https://www.juyingel.com.cn/software/software/JYDAM%E8%B0%83%E8%AF%95%E8%BD%AF%E4%BB%B6.rar>

<https://www.juyingel.com.cn/software/jynet/%E4%BB%A5%E5%A4%AA%E7%BD%91%E9%85%8D%E7%BD%AE%E8%BD%AF%E4%BB%B6.rar>

()



JYDAM



